

## **CHAPTER 8**

### **CADAVERIC ORGAN AND TISSUE DONATION**

*Editor:*

Datin Dr Lela Yasmin Mansor

Dr Hooi Lai Seong

*Expert Panel*

Datin Dr Lela Yasmin Mansor (Chairperson)

Dr Hooi Lai Seong

Dr Rosnawati Yahya

Dr Omar Sulaiman

Dr Muhammed Anis Abdul Wahab

Matron Jamaliah Kario

Staff Nurse Santi A/P Krishanan

#### **Contents**

#### **8.0 Introduction**

#### **8.1 Potential Donor Referrals**

#### **8.2. Actual Donations**

#### **8.3 Donor Characteristics**

#### **8.4 Donor Management**

8.1 POTENTIAL DONOR REFERRALS 2010

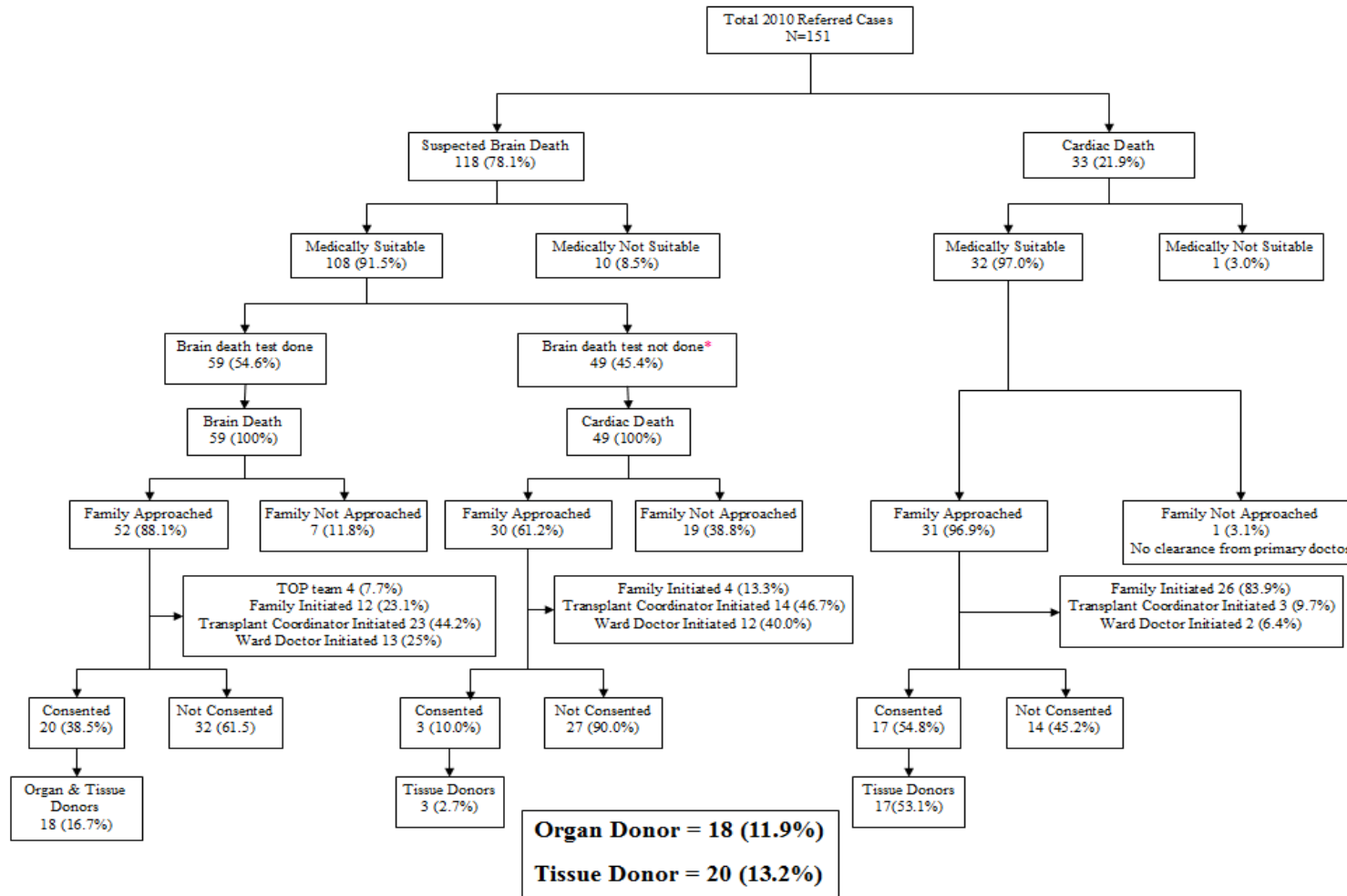


Figure 8.1.1: Conversion of Potential Donors to Actual Donors, 2010

Table 8.1.1: Reason for Brain Death Test Not Done, 2010

<b>Reason for Brain Test Not Done</b>	<b>No.</b>	<b>%</b>
No clearance from primary doctor	7	14
No clearance from family	9	19
Unable to correct parameters for brain death diagnosis	5	10
Proceeded to cardiac death before test could be done	7	14
Others	3	6
No reason given	18	37
<b>Total</b>	<b>49</b>	<b>100</b>

Table 8.1.2: Reason for Not Approaching the Family, 2010

<b>Reason Family Not Approach</b>	<b>Brain Death</b>		<b>Cardiac Death</b>		<b>Total</b>
	<b>No.</b>	<b>%</b>	<b>No.</b>	<b>%</b>	
No clearance from primary doctor	1	14	9	45	10
Family did not accept death	3	43	2	10	5
Staff uncomfortable about making the request	0	0	1	5	1
Unable to contact family	1	14	2	10	3
Others	2	29	6	30	8
<b>Total</b>	<b>7</b>	<b>100</b>	<b>20</b>	<b>100</b>	<b>27</b>

Table 8.1.3: Potential Donor Referrals and Actual Donations by Month, 2010

<b>Month</b>	<b>Total Referred Cases</b>	<b>Actual donors</b>	
		<b>Brain Death Donors (BD)</b>	<b>Cardiac Death Tissue Donors (CD)</b>
	<b>No.</b>	<b>No.</b>	<b>No.</b>
January	19	3	3
February	23	4	2
March	15	0	1
April	12	1	2
May	11	1	1
June	13	1	4
July	11	3	3
August	11	0	0
September	10	0	0
October	7	1	2
November	9	2	2
December	10	2	0
<b>TOTAL</b>	<b>151</b>	<b>18</b>	<b>20</b>

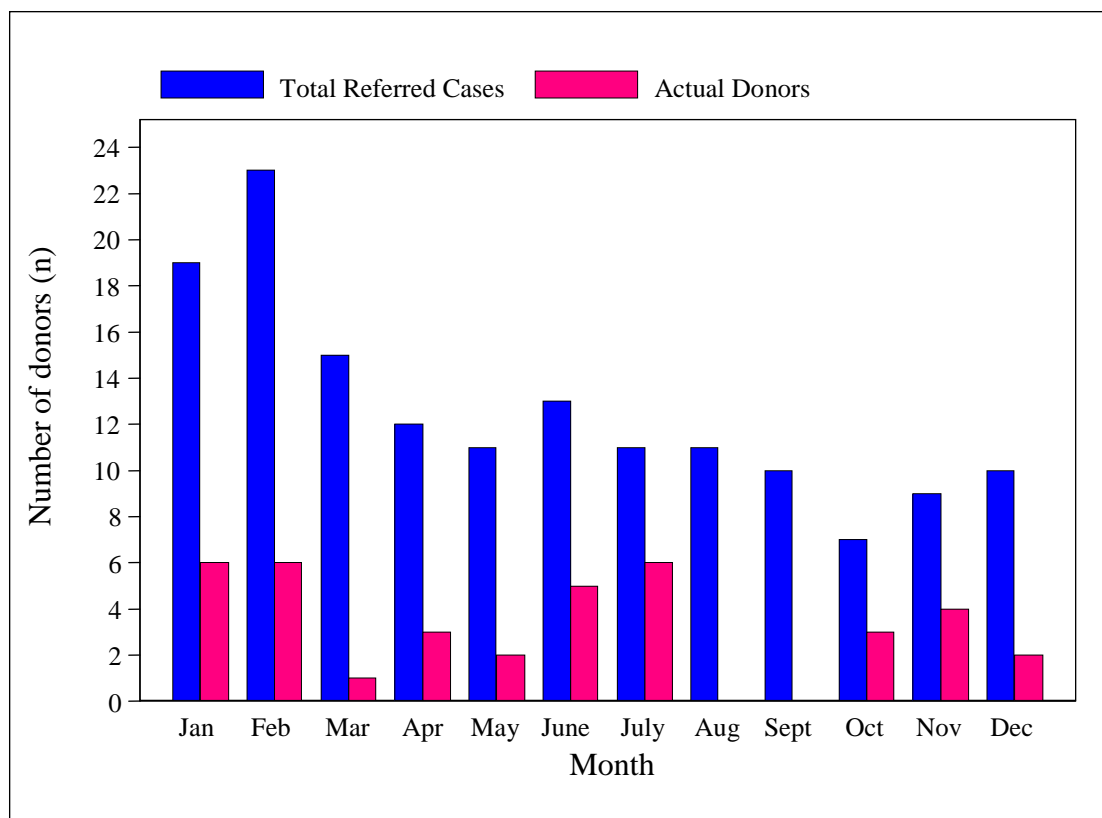


Figure 8.1.2: Total Referred Cases and Actual Donations by Month, 2010

## 8.2 ACTUAL DONATIONS

Table 8.2.1: Number of Donations by Year, 1997-2010

Number of donations by year N=291														
Year	1997	1998	1999	2000	2001	2002	2003	2004	2005	2006	2007	2008	2009	2010
Number of referrals	5	7	4	13	28	36	104	91	64	111	74	110	142	151
Number of Brain Death: Organ and Tissue Donor	4	6	4	11	22	17	10	10	5	14	15	14	18	18
Number of Cardiac Death: Tissue Donor	1	1	0	2	3	13	16	6	8	11	10	12	21	20
Number of donors	5	7	4	13	24	30	26	16	13	25	25	26	39	38
Rate of procurement (per million population)	0.23	0.32	0.18	0.55	1.0	1.22	1.04	0.63	0.5	0.94	0.92	0.94	1.38	1.34

Table 8.2.2: Number of Organ Donors by Year, 1997-2010

Year	1997	1998	1999	2000	2001	2002	2003	2004	2005	2006	2007	2008	2009	2010
Number of organ donors	4	6	4	11	20	13	9	9	5	13	14	13	18	18
Rate of organ donors (per million population)	0.18	0.27	0.18	0.47	0.83	0.53	0.36	0.35	0.19	0.49	0.52	0.47	0.64	0.64

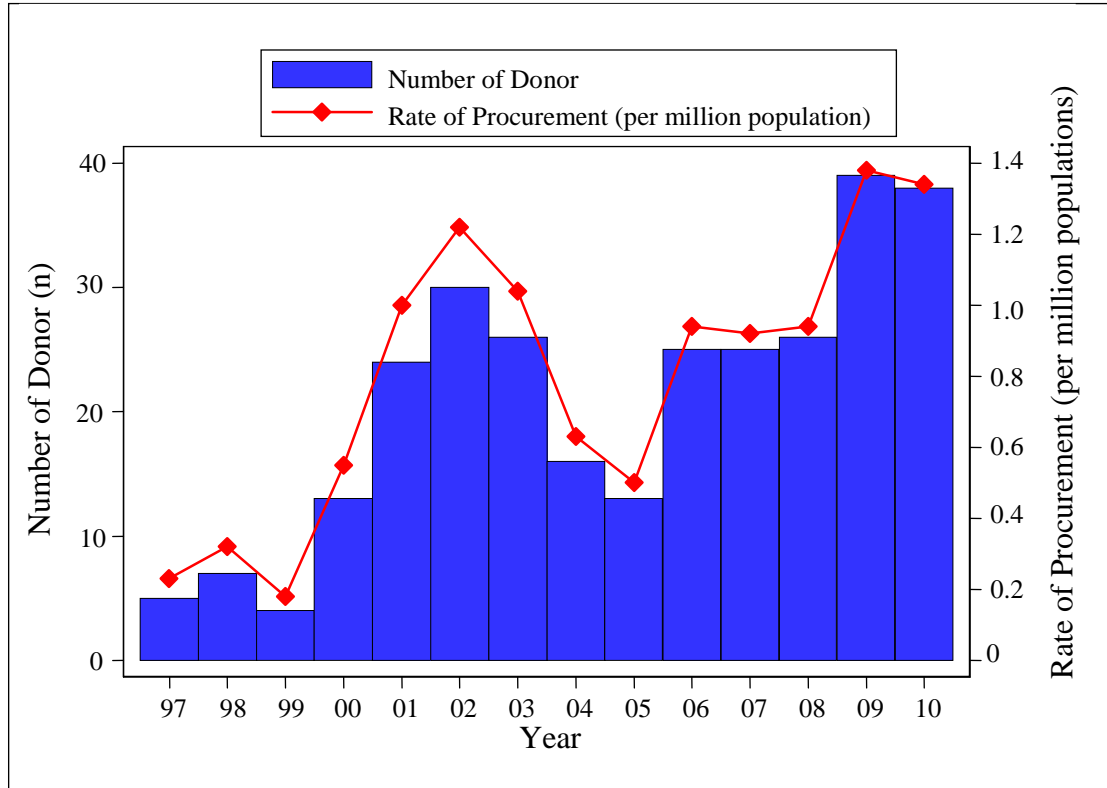


Figure 8.2.1: Number of Donations

by Year, 1997-2010

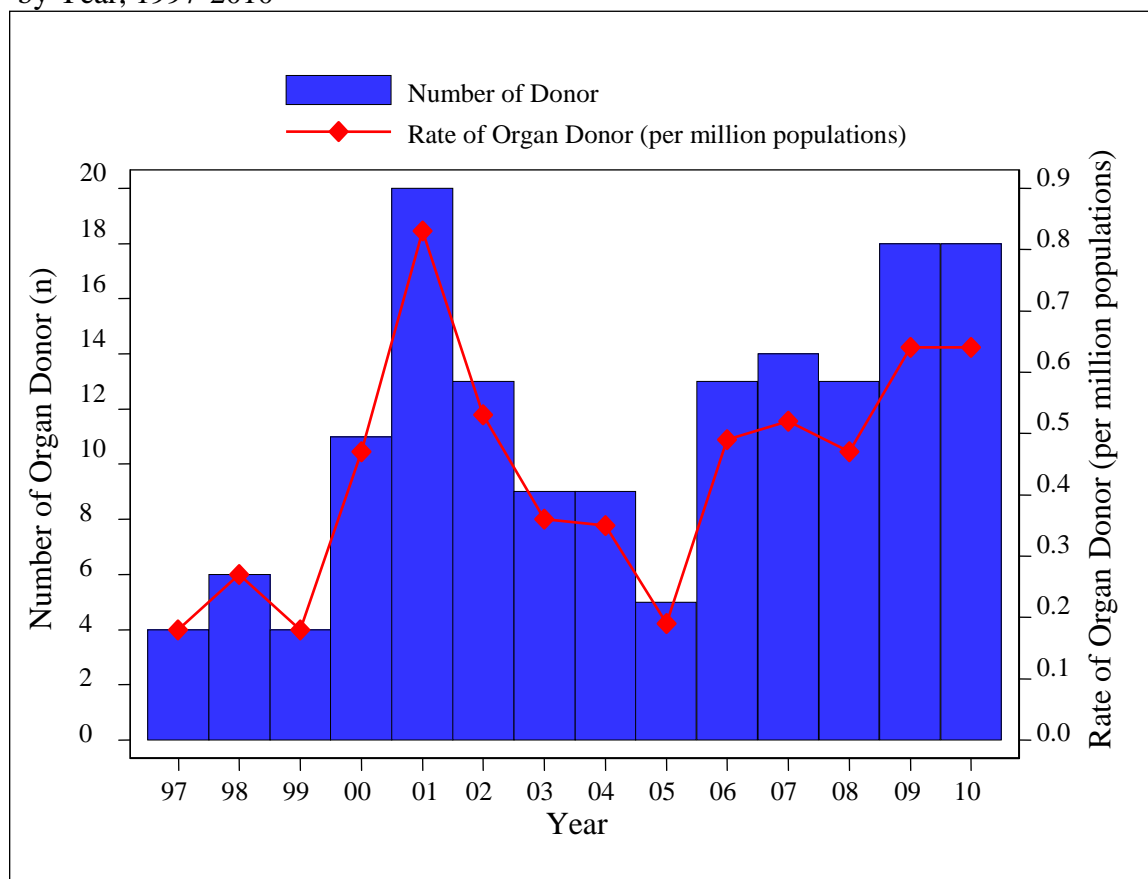


Figure 8.2.2: Number of Organ Donors by Year, 1997-2010

Table 8.2.3: Number of Organs Procured by Year, 1997-2010

Number of procurement by year N=291														
Organs procured	1997	1998	1999	2000	2001	2002	2003	2004	2005	2006	2007	2008	2009	2010
Cornea	4	10	6	18	32	48	42	20	22	38	34	40	50	54
Heart	1	3	2	3	4	0	2	0	1	1	4	0	1	0
Liver	0	0	2	2	1	2	1	3	3	5	6	4	6	4
Kidney	8	10	6	22	38	26	18	18	10	26	28	26	36	36
Heart valve	0	1	2	8	10	10	11	11	6	16	8	13	20	14
Bone	0	1	0	3	2	6	5	5	2	5	5	4	9	7
Skin	0	0	0	2	2	2	1	1	0	2	0	0	3	1
Lung	0	0	0	0	0	0	0	0	1	1	3	0	0	1

8.3 DONOR CHARACTERISTICS

Table 8.3.1: Age Distribution of Donors, 1997-2010

Donor's age (years)	1997 N=5		1998 N=7		1999 N=4		2000 N=13		2001 N=24		2002 N=30		2003 N=26		2004 N=16		2005 N=13		2006 N=25		2007 N=25		2008 N=26		2009 N=39		2010 N=38		Total N=291			
	No.	%	No.	%	No.	%	No.	%	No.	%	No.	%	No.	%	No.	%	No.	%	No.	%	No.	%	No.	%	No.	%	No.	%	No.	%		
<1	0	0	0	0	0	0	0	0	0	0	0	0	1	4	0	0	0	0	0	0	0	0	0	0	0	0	1	3	0	0	2	1
1-9	1	20	0	0	0	0	1	8	1	4	1	3	1	4	1	6	1	8	2	8	3	12	3	12	3	8	0	0	18	6		
10-19	0	0	1	14	2	50	7	54	2	8	3	10	4	15	3	19	1	8	9	36	6	24	3	12	8	21	3	8	52	18		
20-29	1	20	3	43	2	50	1	8	6	25	6	20	4	15	3	19	2	15	2	8	6	24	7	27	7	18	10	26	60	21		
30-39	1	20	0	0	0	0	0	0	5	21	1	3	3	12	2	13	1	8	1	4	1	4	3	12	9	23	4	11	31	11		
40-49	0	0	1	14	0	0	2	15	4	17	8	27	4	15	4	25	2	15	3	12	5	20	5	19	3	8	9	24	50	17		
50-59	1	20	2	29	0	0	1	8	4	17	7	23	3	12	3	19	1	8	2	8	2	8	2	8	6	15	8	21	42	14		
60-69	0	0	0	0	0	0	1	8	2	8	0	0	3	12	0	0	3	23	4	16	2	8	1	4	0	0	3	8	19	7		
70-79	0	0	0	0	0	0	0	0	0	0	4	13	3	12	0	0	1	8	2	8	0	0	1	4	0	0	1	3	12	4		
80-89	0	0	0	0	0	0	0	0	0	0	0	0	0	0	0	0	1	8	0	0	0	0	0	0	0	0	0	0	1	0		
No data	1	20	0	0	0	0	0	0	0	0	0	0	0	0	0	0	0	0	0	0	0	0	1	4	2	5	0	0	4	1		
<b>Total</b>	5		7		4		13		24		30		26		16		13		25		25		26		39		38		291			
Mean	27.25		34.43		20.50		25.23		36.88		42.37		39.41		32.50		46.19		35.71		29.64		31.72		29.00		39.90		35.11			
SD	21.06		17.12		4.43		18.71		15.67		19.61		21.78		15.57		24.70		23.43		18.81		18.82		14.78		16.73		19.15			
Median	28.00		25.00		21.00		17.00		37.00		46.00		39.79		31.50		48.00		23.00		23.00		27.00		29.00		41.75		34.00			
Minimum	2		16		15		5		8		4		<1*		8		3		3		1**		1		<1*		12		<1*			
Maximum	51		57		25		60		66		79		77		55		82***		77		68		71		56		79		82***			

\* The youngest tissue donor was 25 day old baby who donated heart valves in 2009 and 37 day old who donated heart valves in 2003

\*\* The youngest organ donor was 14.5 month old who donated kidneys in 2007

\*\*\* The oldest tissue donor was 82 year old who donated eyes in 2005; the oldest organ donor was 66 year old who donated kidneys in 2001

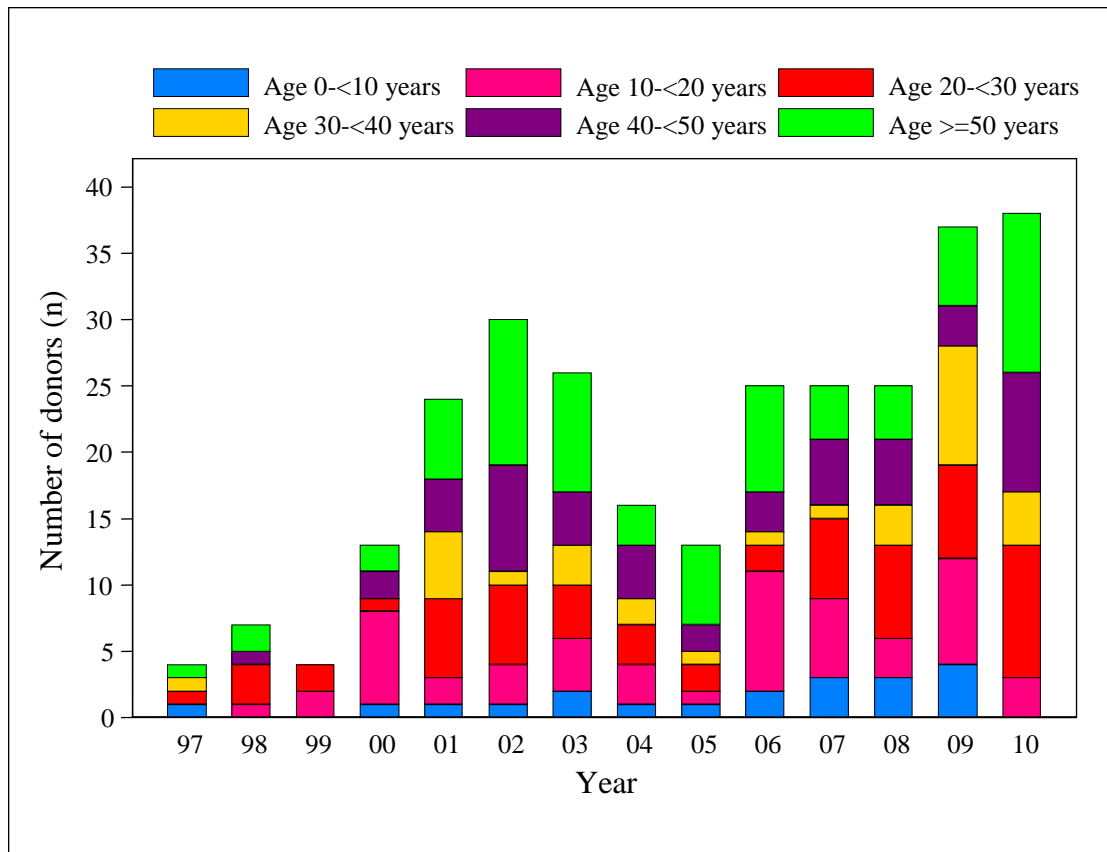


Figure 8.3.1.1: Donor's Age Group, 1997-2010

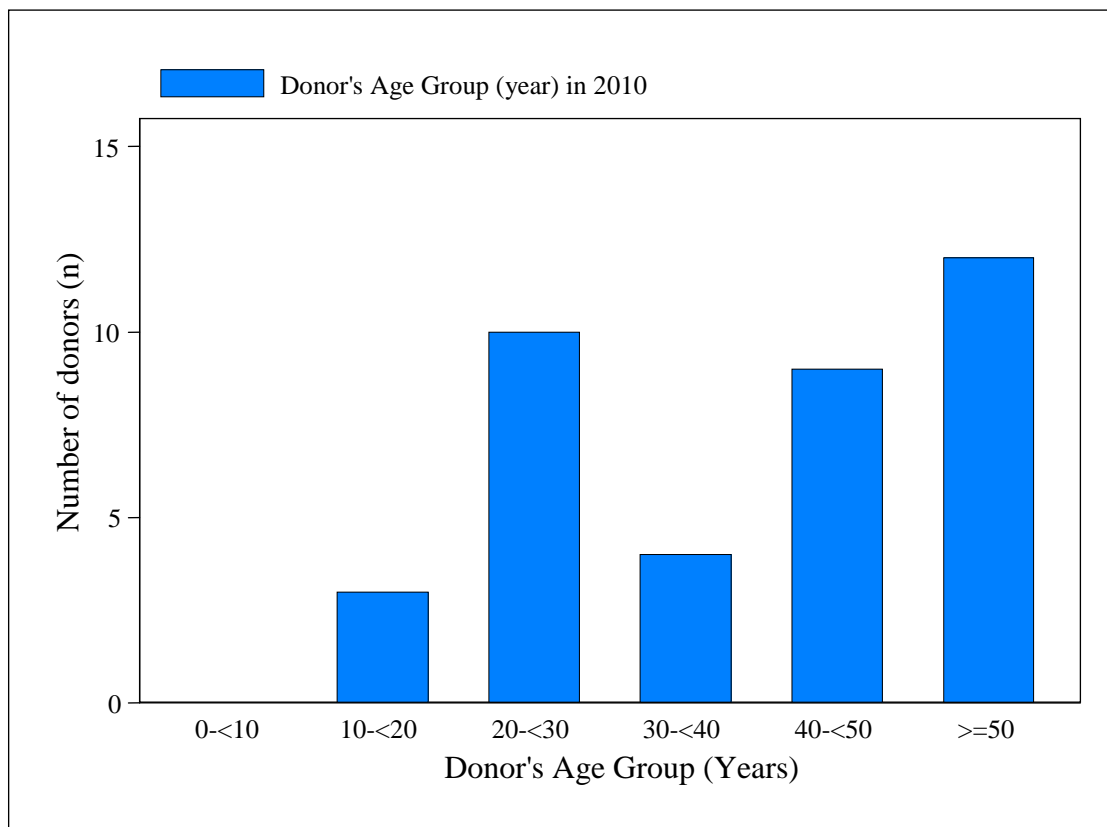


Figure 8.3.1.2: Donor's Age Group, 2010



Table 8.3.2: Donor's Gender, 1997-2010

Donor's gender	1997 N=5		1998 N=7		1999 N=4		2000 N=13		2001 N=24		2002 N=30		2003 N=26		2004 N=16	
	No.	%	No.	%	No.	%	No.	%	No.	%	No.	%	No.	%	No.	%
Male	3	60	7	100	3	75	11	85	20	83	27	90	22	85	12	75
Female	2	40	0	0	1	25	2	15	4	17	3	10	4	15	4	25

Donor's gender	2005 N=13		2006 N=25		2007 N=25		2008 N=26		2009 N=39		2010 N=38		Total N=291	
	No.	%	No.	%	No.	%	No.	%	No.	%	No.	%	No.	%
Male	8	62	19	76	20	80	18	69	26	67	26	68	222	76
Female	5	38	6	24	5	20	8	31	13	33	12	32	69	24

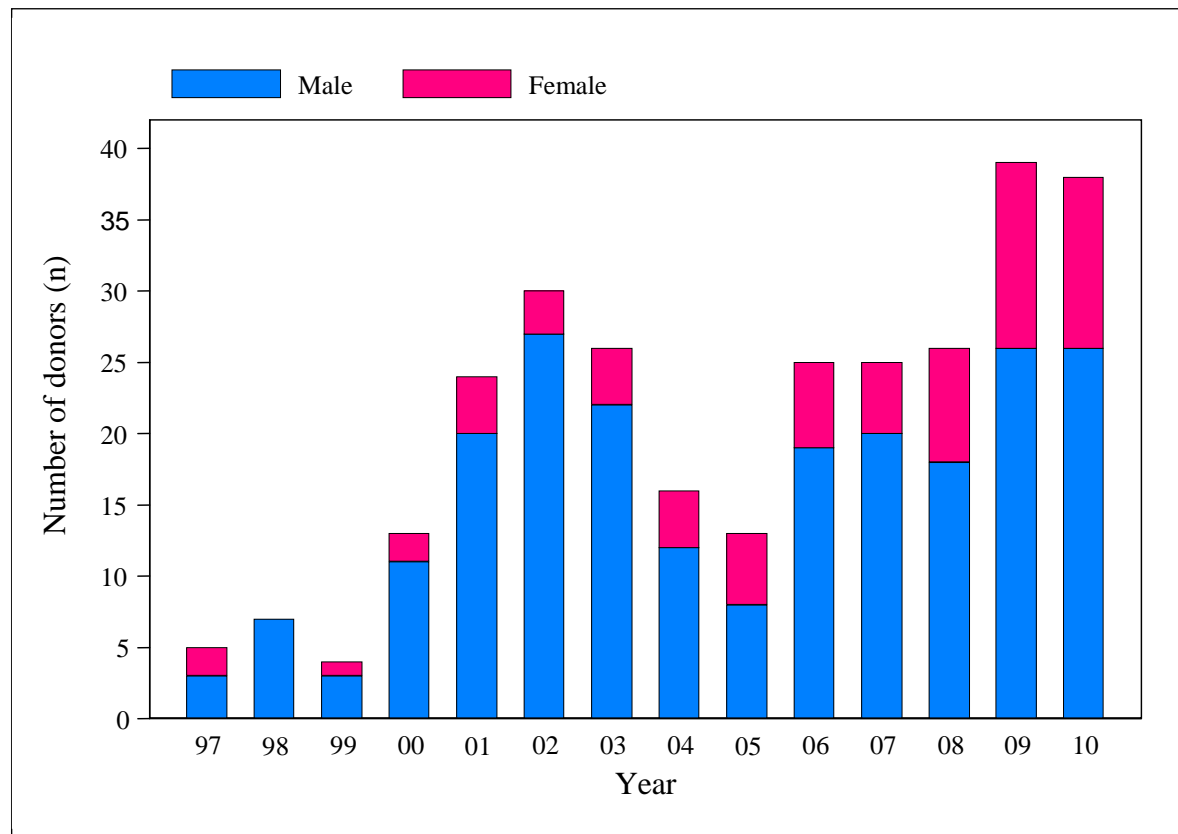


Figure 8.3.2: Donor's Gender, 1997-2010

Table 8.3.3: Donor's Ethnic Group, 1997-2010

Donor's ethnic group	1997 N=5		1998 N=7		1999 N=4		2000 N=13		2001 N=24		2002 N=30		2003 N=26		2004 N=16	
	No.	%	No.	%	No.	%	No.	%	No.	%	No.	%	No.	%	No.	%
Malay	1	20	0	0	0	0	2	15	1	4	0	0	0	0	1	6
Chinese	3	60	4	57	4	100	7	54	17	71	13	43	14	54	14	88
Indian	1	20	3	43	0	0	3	23	4	17	15	50	10	38	1	6
Others	0	0	0	0	0	0	1	8	2	8	2	7	2	8	0	0

Donor's ethnic group	2005 N=13		2006 N=25		2007 N=25		2008 N=26		2009 N=39		2010 N=38		Total N=291	
	No.	%	No.	%	No.	%	No.	%	No.	%	No.	%	No.	%
Malay	1	8	1	4	5	20	0	0	3	8	1	3	16	5
Chinese	5	38	12	48	14	56	17	65	26	67	26	68	176	60
Indian	7	54	11	44	3	12	6	23	10	26	10	26	84	29
Others	0	0	1	4	3	12	3	12	0	0	1	3	15	5

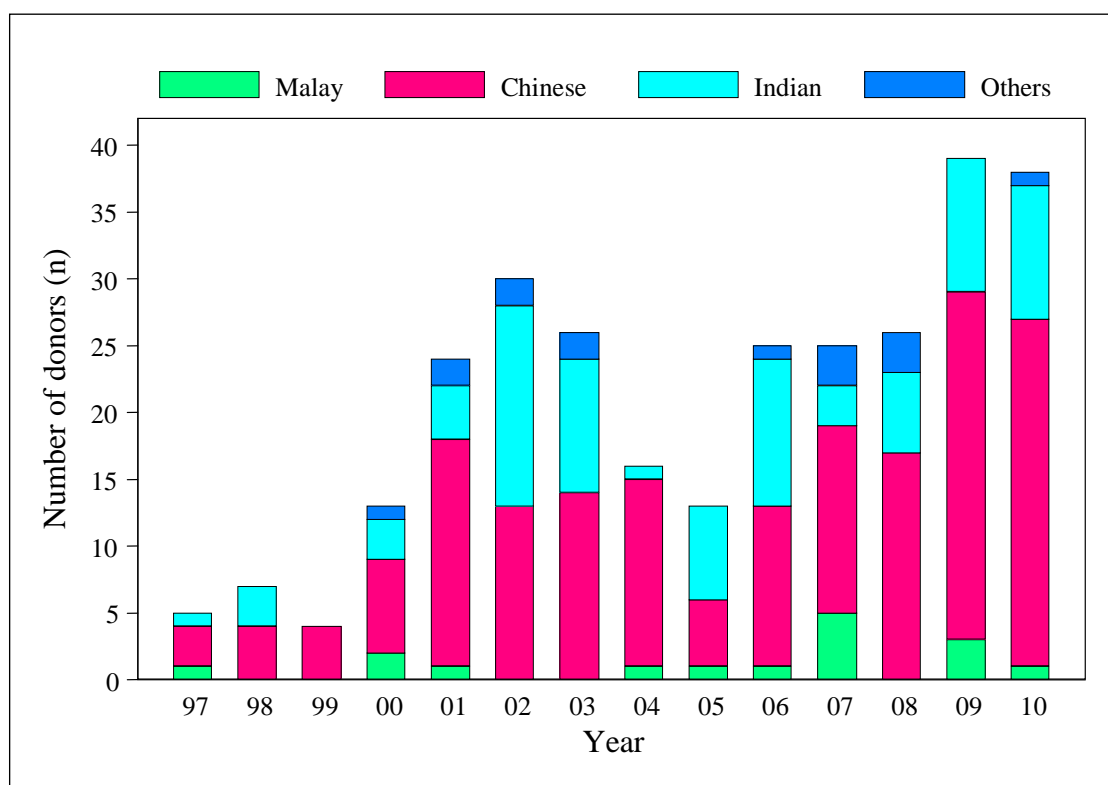


Figure 8.3.3: Donor's Ethnic Group, 1997-2010

Table 8.3.4: Donor's Religion, 1997-2010

Donor's religion	1997 N=5		1998 N=7		1999 N=4		2000 N=13		2001 N=24		2002 N=30		2003 N=26		2004 N=16	
	No.	%	No.	%	No.	%	No.	%	No.	%	No.	%	No.	%	No.	%
Islam	1	20	0	0	0	0	2	15	1	4	0	0	1	4	2	13
Buddhism	3	60	3	43	0	0	0	0	1	4	5	17	14	54	14	88
Hinduism	1	20	3	43	0	0	3	23	3	13	13	43	7	27	0	0
Christianity	0	0	0	0	0	0	1	8	0	0	1	3	0	0	0	0
Others	0	0	0	0	0	0	0	0	0	0	0	0	2	8	0	0
Unknown	0	0	1	14	4	100	7	54	19	79	11	37	2	8	0	0

Donor's religion	2005 N=13		2006 N=25		2007 N=25		2008 N=26		2009 N=39		2010 N=38		Total N=291	
	No.	%	No.	%	No.	%	No.	%	No.	%	No.	%	No.	%
Islam	1	8	2	8	5	20	0	0	3	8	1	3	19	7
Buddhism	4	31	11	44	13	52	16	62	3	8	25	66	112	38
Hinduism	5	38	10	40	2	8	6	23	3	8	9	24	65	22
Christianity	0	0	0	0	4	16	3	12	0	0	1	3	10	3
Others	2	15	0	0	1	4	0	0	0	0	2	5	7	2
Unknown	1	8	2	8	0	0	1	4	30	77	0	0	78	27

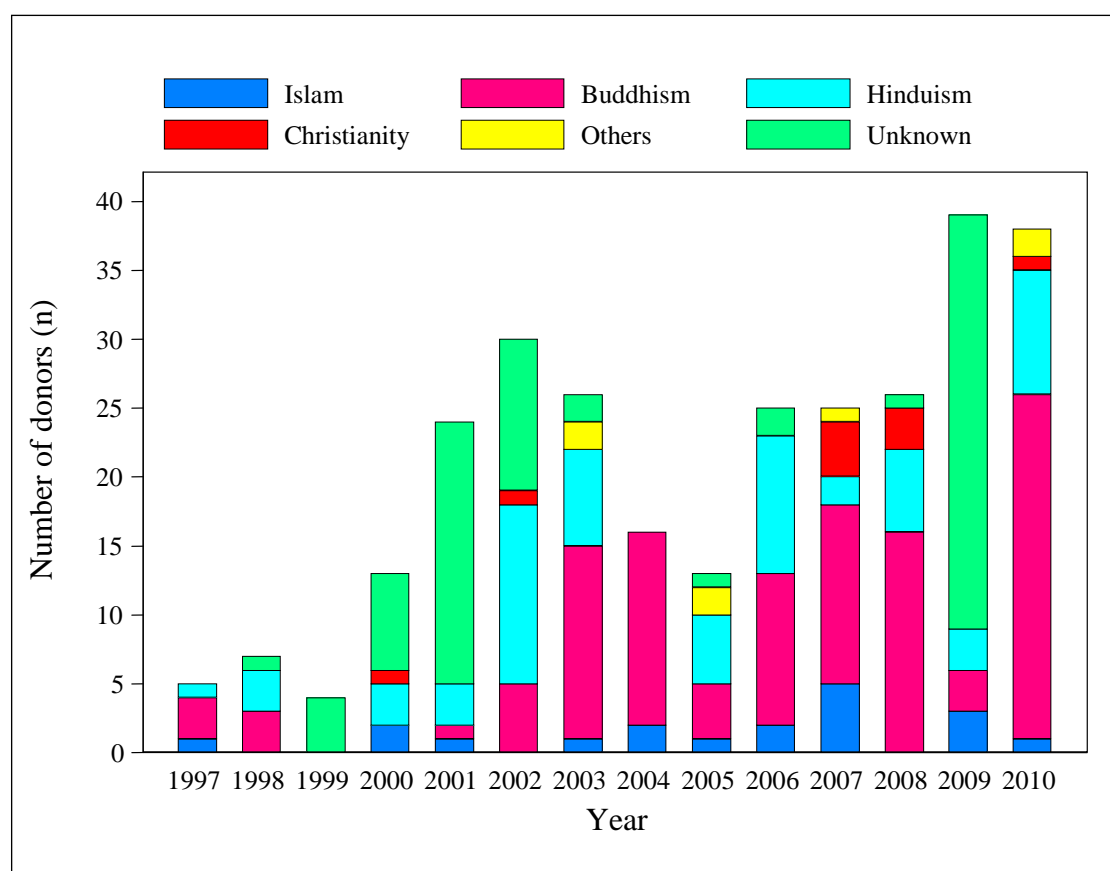


Figure 8.3.4: Donor's Religion, 1997-2010

Table 8.3.5: Donor's Nationality, 1997-2010

Nationality	1997 N=5		1998 N=7		1999 N=4		2000 N=13		2001 N=24		2002 N=30		2003 N=26		2004 N=16	
	No.	%	No.	%	No.	%	No.	%	No.	%	No.	%	No.	%	No.	%
Malaysian	5	100	7	100	4	100	13	100	21	88	29	97	25	96	16	100
Non-Malaysian	0	0	0	0	0	0	0	0	3	12	1	3	1	4	0	0

Nationality	2005 N=13		2006 N=25		2007 N=25		2008 N=26		2009 N=39		2010 N=38		Total N=291	
	No.	%	No.	%	No.	%	No.	%	No.	%	No.	%	No.	%
Malaysian	13	100	24	96	24	96	24	92	39	100	38	100	282	97
Non-Malaysian	0	0	1	4	1	4	2	8	0	0	0	0	9	3

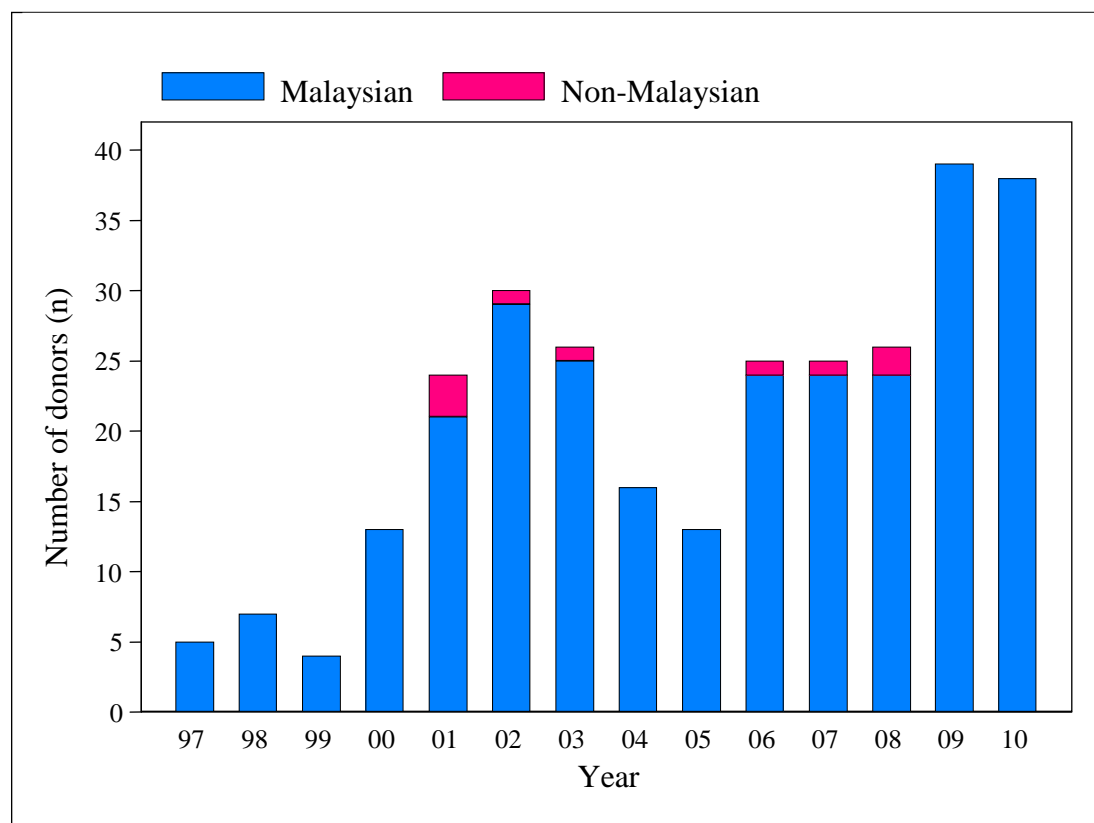


Figure 8.3.5: Donor's Nationality, 1997-2010

Table 8.3.6: Donor's State of Residence, 1997-2010

Donor's state of residence	1997 N=5		1998 N=7		1999 N=4		2000 N=13		2001 N=24		2002 N=30		2003 N=26		2004 N=16	
	No.	%	No.	%	No.	%	No.	%	No.	%	No.	%	No.	%	No.	%
Johor	0	0	0	0	0	0	3	23	0	0	2	7	4	15	1	6
Malacca	0	0	1	14	1	25	0	0	0	0	1	3	2	8	0	0
Negeri Sembilan	0	0	1	14	0	0	1	8	0	0	1	3	4	15	0	0
Selangor	2	40	1	14	0	0	0	0	3	13	9	30	6	23	6	38
WP Kuala Lumpur	1	20	1	14	2	50	0	0	0	0	6	20	2	8	3	19
WP Putrajaya	0	0	0	0	0	0	0	0	0	0	0	0	0	0	0	0
Perak	1	20	2	29	1	25	3	23	0	0	4	13	0	0	2	13
Kedah	0	0	0	0	0	0	2	15	3	13	1	3	0	0	1	6
Perlis	0	0	0	0	0	0	0	0	0	0	0	0	0	0	0	0
Pulau Pinang	0	0	0	0	0	0	1	8	3	13	1	3	3	12	2	13
Pahang	0	0	1	14	0	0	0	0	3	13	2	7	2	8	0	0
Terengganu	0	0	0	0	0	0	0	0	1	4	0	0	0	0	0	0
Kelantan	0	0	0	0	0	0	1	8	0	0	0	0	0	0	0	0
Sabah	0	0	0	0	0	0	2	15	1	4	0	0	1	4	1	6
Sarawak	0	0	0	0	0	0	0	0	0	0	0	0	0	0	0	0
Unknown	1	20	0	0	0	0	0	0	10	42	3	10	2	8	0	0

Donor's state of residence	2005 N=13		2006 N=25		2007 N=25		2008 N=26		2009 N=39		2010 N=38		Total N=291	
	No.	%	No.	%	No.	%	No.	%	No.	%	No.	%	No.	%
Johor	1	8	1	4	5	20	3	12	6	15	9	24	35	12
Malacca	1	8	2	8	1	4	0	0	1	3	3	8	13	4
Negeri Sembilan	1	8	2	8	1	4	2	8	3	8	1	3	17	6
Selangor	7	54	2	8	6	24	3	12	13	33	7	18	65	22
WP Kuala Lumpur	2	15	6	24	3	12	8	31	6	15	6	16	46	16
WP Putrajaya	0	0	0	0	0	0	0	0	0	0	0	0	0	0
Perak	1	8	4	16	2	8	3	12	4	10	7	18	34	12
Kedah	0	0	1	4	2	8	1	4	0	0	0	0	11	4
Perlis	0	0	0	0	0	0	0	0	0	0	0	0	0	0
Pulau Pinang	0	0	4	16	2	8	2	8	5	13	4	11	27	9
Pahang	0	0	1	4	1	4	2	8	1	3	0	0	13	4
Terengganu	0	0	0	0	1	4	0	0	0	0	0	0	2	1
Kelantan	0	0	1	4	0	0	0	0	0	0	0	0	2	1
Sabah	0	0	0	0	0	0	2	8	0	0	1	3	8	3
Sarawak	0	0	0	0	0	0	0	0	0	0	0	0	0	0
Unknown	0	0	1	4	1	4	0	0	0	0	0	0	18	6

Table 8.3.7: Donors who were registered pledgers, 1997-2010

Donor's pledged status	1997 N=5		1998 N=7		1999 N=4		2000 N=13		2001 N=24		2002 N=30		2003 N=26		2004 N=16	
	No.	%	No.	%	No.	%	No.	%	No.	%	No.	%	No.	%	No.	%
Pledged	0	0	0	0	0	0	0	0	0	0	5	17	6	23	5	31
Non-Pledged	5	100	7	100	4	100	13	100	24	100	25	83	20	77	11	69
Unknown	0	0	0	0	0	0	0	0	0	0	0	0	0	0	0	0
<b>Total</b>	<b>5</b>	<b>100</b>	<b>7</b>	<b>100</b>	<b>4</b>	<b>100</b>	<b>13</b>	<b>100</b>	<b>24</b>	<b>100</b>	<b>30</b>	<b>100</b>	<b>26</b>	<b>100</b>	<b>16</b>	<b>100</b>

Donor's pledged status	2005 N=13		2006 N=25		2007 N=25		2008 N=26		2009 N=39		2010 N=38		Total N=291	
	No.	%	No.	%	No.	%	No.	%	No.	%	No.	%	No.	%
Pledged	4	31	3	12	3	12	1	4	3	8	7	18	37	13
Non-Pledged	9	69	22	88	22	88	25	96	34	87	30	79	251	86
Unknown	0	0	0	0	0	0	0	0	2	5	1	3	3	1
<b>Total</b>	<b>13</b>	<b>100</b>	<b>25</b>	<b>100</b>	<b>25</b>	<b>100</b>	<b>26</b>	<b>100</b>	<b>39</b>	<b>100</b>	<b>38</b>	<b>100</b>	<b>291</b>	<b>100</b>

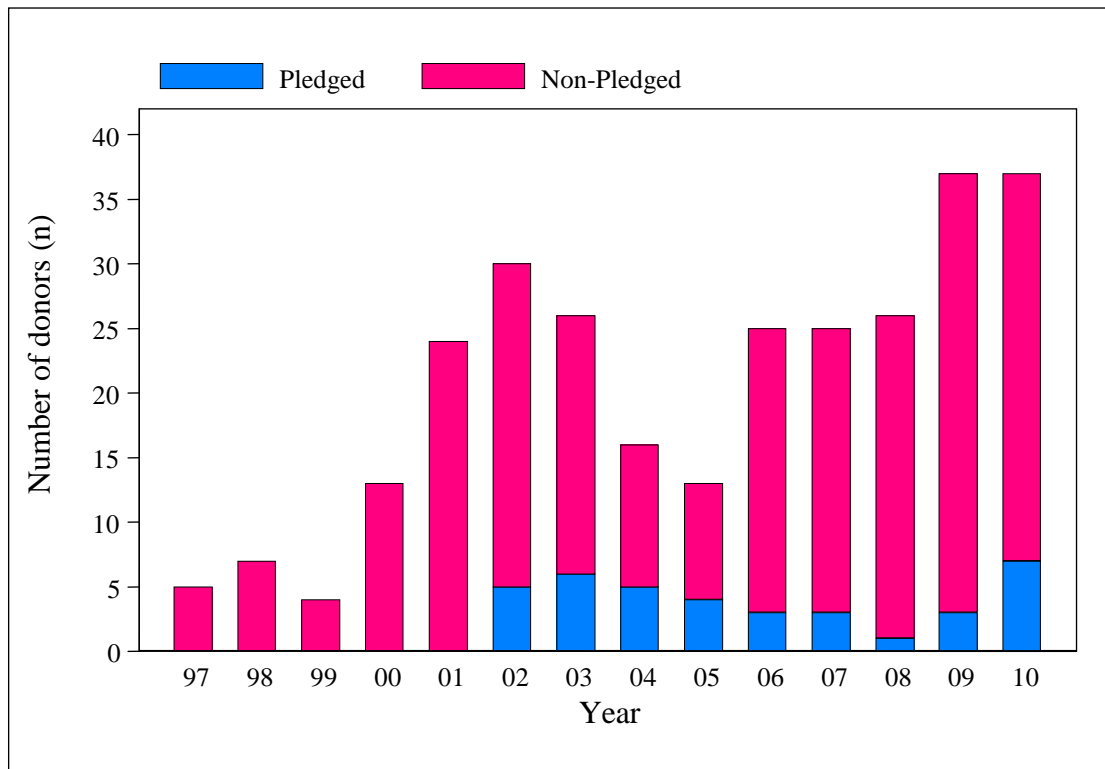


Figure 8.3.7: Donors who were registered pledgers, 1997-2010

Table 8.3.8: Brain Dead Donor's Cause of Death, 2010

Cause of Death	2010 N=18	
	No.	%
Traumatic Head Injury		
• Road Traffic Accident	11	61
Spontaneous Intracranial Hemorrhage	4	22
Thromboembolic Brain Infarct	1	6
Others	2	11

Table 8.3.9: Cardiac Death Donor's Cause of Death, 2010

Cause of Death	2010 N=20	
	No.	%
Traumatic Injury		
• Road Traffic Accident	9	45
• Fall	1	5
• Homicide	1	5
Heart Disease	3	15
Respiratory Disease	1	5
Infection	1	5
Others	4	20

Table 8.3.10: Organ Donor's Blood Group, 1997-2010

Blood group	No. (%)							
	1997 N=4	1998 N=6	1999 N=4	2000 N=11	2001 N=20	2002 N=13	2003 N=9	2004 N=9
A	1 (25)	1 (17)	0 (0)	1 (9)	5 (25)	3 (23)	4 (44)	2 (22)
B	0 (0)	1 (17)	1 (25)	5 (45)	4 (20)	3 (23)	3 (33)	4 (44)
AB	1 (25)	1 (17)	0 (0)	0 (0)	1 (5)	0 (0)	0 (0)	0 (0)
O	2 (50)	2 (33)	3 (75)	5 (45)	10 (50)	7 (54)	2 (22)	3 (33)

Blood group	No. (%)						
	2005 N=5	2006 N=13	2007 N=14	2008 N=13	2009 N=18	2010 N=18	Total N=157
A	1 (20)	4 (31)	7 (50)	4 (31)	6 (33)	4 (22)	43 (27)
B	2 (40)	5 (38)	3 (21)	2 (15)	2 (11)	5 (28)	40 (25)
AB	0 (0)	2 (15)	0 (0)	0 (0)	1 (6)	2 (11)	8 (5)
O	2 (40)	2 (15)	4 (29)	7 (54)	9 (50)	7 (39)	65 (42)

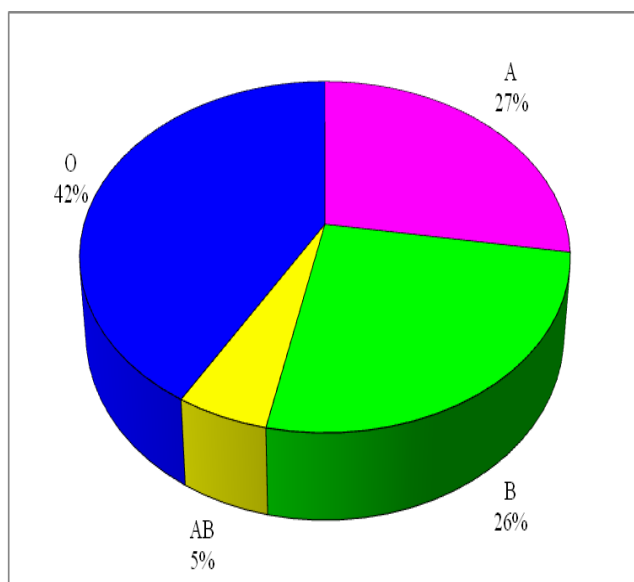


Figure 8.3.8a: Organ Donor's Blood Group, 1997-2010

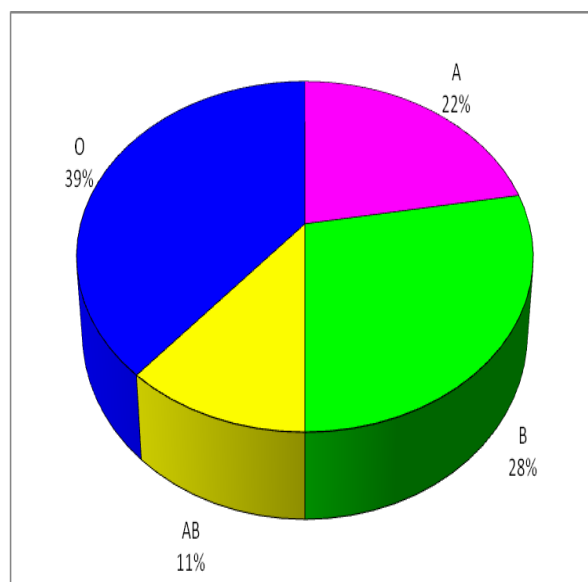


Figure 8.3.8b: Organ Donor's Blood Group, 2010

## 8.4 DONOR MANAGEMENT

Table 8.4.1: State where organ and tissue procurement took place, 1997-2010

State	1997 N=5		1998 N=7		1999 N=4		2000 N=13		2001 N=24		2002 N=30		2003 N=26		2004 N=16	
	No.	%	No.	%	No.	%	No.	%	No.	%	No.	%	No.	%	No.	%
Johor	1	20	0	0	0	0	3	23	0	0	2	7	5	19	1	6
Kedah	0	0	0	0	0	0	3	23	4	17	1	3	0	0	1	6
Kelantan	0	0	0	0	0	0	0	0	0	0	0	0	0	0	0	0
Malacca	0	0	1	14	1	25	0	0	0	0	2	7	1	4	0	0
Negeri Sembilan	0	0	0	0	0	0	1	8	0	0	0	0	3	12	0	0
Pahang	0	0	1	14	0	0	0	0	0	0	3	10	1	4	0	0
Perak	0	0	2	29	1	25	2	15	0	0	2	7	0	0	2	13
Perlis	0	0	0	0	0	0	0	0	0	0	0	0	0	0	0	0
Pulau Pinang	0	0	0	0	0	0	1	8	3	13	0	0	3	12	2	13
Sabah	0	0	0	0	0	0	1	8	0	0	0	0	1	4	1	6
Sarawak	0	0	0	0	0	0	1	8	0	0	0	0	0	0	0	0
Selangor	1	20	0	0	1	25	0	0	2	8	4	13	4	15	2	13
Terengganu	0	0	0	0	0	0	0	0	1	4	0	0	0	0	0	0
WP Kuala Lumpur	2	40	3	43	1	25	1	8	14	58	15	50	8	31	7	44
WP Labuan	0	0	0	0	0	0	0	0	0	0	0	0	0	0	0	0
WP Putrajaya	0	0	0	0	0	0	0	0	0	0	0	0	0	0	0	0
Unknown	1	20	0	0	0	0	0	0	0	0	1	3	0	0	0	0

State	2005 N=13		2006 N=25		2007 N=25		2008 N=26		2009 N=39		2010 N=38		Total N=291	
	No.	%	No.	%	No.	%	No.	%	No.	%	No.	%	No.	%
Johor	1	8	3	12	4	16	2	8	6	15	9	24	37	13
Kedah	0	0	1	4	2	8	1	4	0	0	0	0	13	4
Kelantan	0	0	2	8	0	0	0	0	0	0	0	0	2	1
Malacca	1	8	2	8	1	4	1	4	2	5	3	8	15	5
Negeri Sembilan	1	8	1	4	2	8	2	8	1	3	3	8	14	5
Pahang	0	0	0	0	1	4	0	0	1	3	0	0	7	2
Perak	1	8	1	4	2	8	2	8	4	10	6	16	25	9
Perlis	0	0	0	0	0	0	0	0	0	0	0	0	0	0



State	2005 N=13		2006 N=25		2007 N=25		2008 N=26		2009 N=39		2010 N=38		Total N=291	
	No.	%	No.	%	No.	%	No.	%	No.	%	No.	%	No.	%
Pulau Pinang	0	0	2	8	2	8	2	8	5	13	3	8	23	8
Sabah	0	0	0	0	0	0	2	8	0	0	1	3	6	2
Sarawak	0	0	0	0	0	0	0	0	0	0	0	0	1	0
Selangor	4	31	4	16	4	16	5	19	11	28	10	26	52	18
Terengganu	0	0	0	0	1	4	0	0	0	0	0	0	2	1
WP Kuala Lumpur	5	38	9	36	6	24	7	27	9	23	3	8	90	31
WP Labuan	0	0	0	0	0	0	0	0	0	0	0	0	0	0
WP Putrajaya	0	0	0	0	0	0	0	0	0	0	0	0	0	0
Unknown	0	0	0	0	0	0	2	8	0	0	0	0	4	1

Table 8.4.2: Establishments where organ and tissue procurement took place, 1997-2010

Donor's Institution of Procurement	1997 N=5		1998 N=7		1999 N=4		2000 N=13		2001 N=24		2002 N=30		2003 N=25		2004 N=16	
	No.	%	No.	%	No.	%	No.	No.	No.	%	No.	%	No.	%	No.	%
MOH State hospitals	2	40	5	71	1	25	10	77	16	67	18	60	16	62	11	69
MOH Specialist hospitals	0	0	0	0	0	0	2	15	0	0	4	13	3	12	2	13
MOH Non-Specialist hospitals	0	0	0	0	0	0	0	0	0	0	0	0	1	4	1	6
University hospitals	1	20	1	14	0	0	0	0	6	25	3	10	3	12	1	6
Private hospitals	1	20	0	0	3	75	1	8	2	8	4	13	3	12	1	6
Others	1	20	1	14	0	0	0	0	0	0	1	3	0	0	0	0

Donor's Institution of Procurement	2005 N=13		2006 N=25		2007 N=25		2008 N=26		2009 N=39		2010 N=38		Total N=291	
	No.	%	No.	%	No.	%	No.	%	No.	%	No.	%	No.	%
MOH State hospitals	6	46	17	68	14	56	8	31	20	51	22	58	166	57
MOH Specialist hospitals	3	23	3	12	6	24	7	27	12	31	14	37	56	19
MOH Non-Specialist hospitals	0	0	0	0	1	4	0	0	1	3	0	0	4	1
University hospitals	1	8	3	12	2	8	3	12	4	10	0	0	28	10
Private hospitals	3	23	2	8	2	8	6	23	2	5	2	5	32	11
Others	0	0	0	0	0	0	2	8	0	0	0	0	5	2

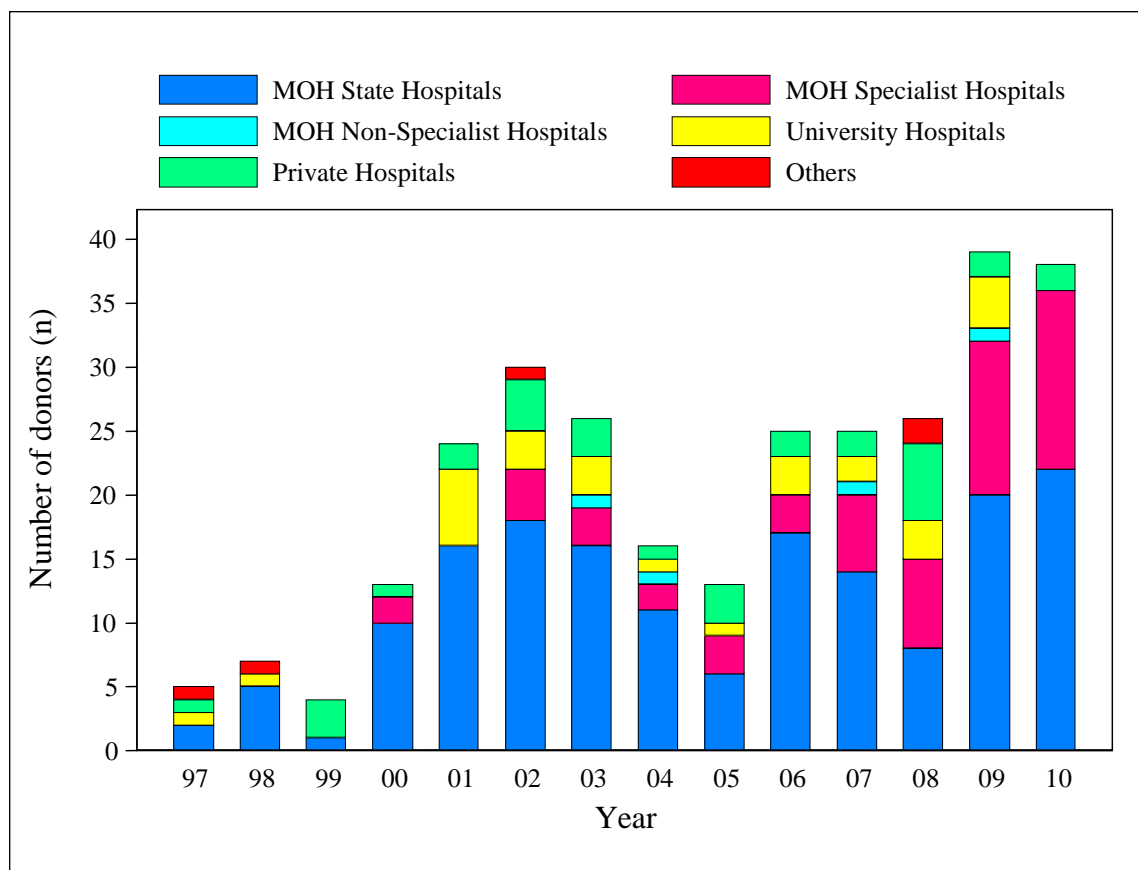


Figure 8.4.2: Establishments where organ and tissue procurement took place, 1997-2010

Table 8.4.3: Location where donors were referred from, 1997-2010

Donor Referral Site	1997 N=5		1998 N=7		1999 N=4		2000 N=13		2001 N=24		2002 N=30		2003 N=26		2004 N=16	
	No.	%	No.	%	No.	%	No.	%	No.	%	No.	%	No.	%	No.	%
ICU	1	20	0	0	0	0	1	8	14	58	16	53	13	50	12	75
Ward	0	0	0	0	0	0	0	0	0	0	1	3	3	12	1	6
Emergency department	0	0	0	0	0	0	0	0	3	13	4	13	1	4	0	0
Mortuary	0	0	0	0	0	0	0	0	0	0	3	10	5	19	3	19
Home	1	20	0	0	0	0	0	0	0	0	1	3	0	0	0	0
Others	0	0	0	0	0	0	0	0	0	0	0	0	0	0	0	0
Unknown/Missing	3	60	7	100	4	100	12	92	7	29	5	17	4	15	0	0

Donor Referral Site	2005 N=13		2006 N=25		2007 N=25		2008 N=26		2009 N=39		2010 N=38		Total N=291	
	No.	%	No.	%	No.	%	No.	%	No.	%	No.	%	No.	%
ICU	7	54	16	64	17	68	17	65	18	46	22	58	154	53
Ward	3	23	3	12	1	4	3	12	4	10	3	8	22	8
Emergency department	0	0	3	12	1	4	1	4	2	5	3	8	18	6
Mortuary	1	8	3	12	5	20	3	12	13	33	10	26	46	16
Home	0	0	0	0	0	0	2	8	0	0	0	0	4	1
Others	0	0	0	0	0	0	0	0	2	5	0	0	2	1
Unknown/Missing	2	15	0	0	1	4	0	0	0	0	0	0	45	15

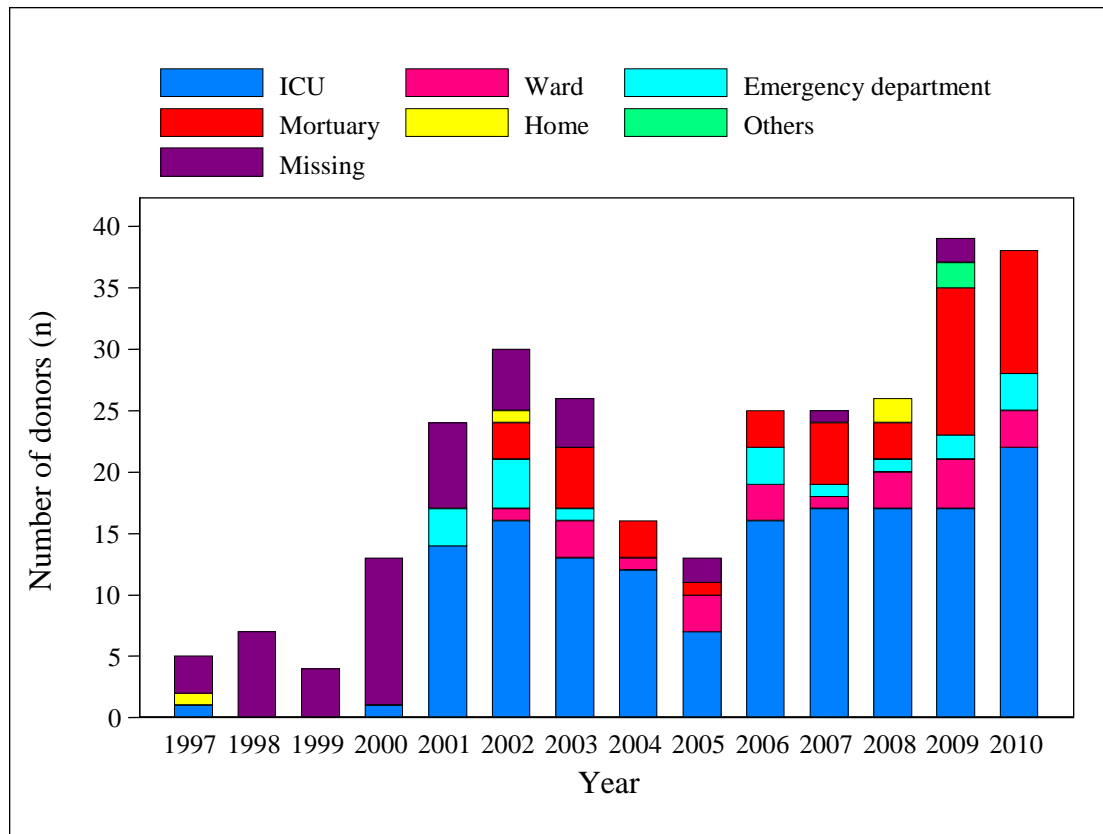


Figure 8.4.3: Location where donors were referred from, 1997-2010

Table 8.4.4: Inotrope Usage, 2010

Inotropes	No.	%
Noradrenaline only	4	22.2
Dopamine only	2	11.1
Dopamine and Noradrenaline	7	38.9
Dopamine, Noradrenaline and Adrenaline	1	5.56
Dopamine, Dobutamine and Noradrenaline	4	22.2
<b>Total</b>	<b>18</b>	<b>100</b>

Table 8.4.5: Serology Profile, 1997-2010

Serology	1997	1998	1999	2000	2001	2002	2003	2004
HBs Antigen Positive	0	1	0	0	1	0	0	1
HBsAb & Hep B Core Ab Positive	No data							
HBsAb Negative & Anti Hep B Core Ab Positive	No data							
HBsAb Positive	No data							
Hep B Core Ab Positive	No data						1	4

Serology	2005	2006	2007	2008	2009	2010	Total
HBs Antigen Positive	0	1	0	0	3	1	8
HBsAb & Hep B Core Ab Positive	No data				1	4	5
HBsAb Negative & Anti Hep B Core Ab Positive	No data				3	3	6
HBsAb Positive	No data				2	8	10
Hep B Core Ab Positive	0	4	5	2	4	7	27

Table 8.4.6: Donor's medical history, 2010

<b>Medical History</b>	<b>Number (N=38)</b>	<b>%</b>
Heart Disease	4	11
Hypertension	4	11
Diabetes	2	5
Drank Alcohol	8	21
Smoked	11	29
None	22	58

Table 8.4.7: Cold Ischaemic Duration for Various Organs, 2010

<b>Organs</b>	<b>Heart</b>	<b>Lung</b>	<b>Heart &amp; Lung</b>	<b>Liver</b>	<b>Kidney</b>
No. Of Organs	0	1	0	3	34
Mean (Time, hours)	-	4.9	-	5.5	13.1
SD (Time, hours)	-	-	-	2.1	6.2
Median (Time, hours)	-	4.9	-	6.3	13.1
Minimum (Time, hours)	-	4.9	-	3.1	1.3
Maximum (Time, hours)	-	4.9	-	7.2	25.5