

CHAPTER 6

HOMOGRAFT - HEART VALVE TRANSPLANTATION

Editor:

Prof Dato' Dr. Mohd Ezani Hj Md. Taib
Dato' Dr David Chew Soon Ping

Expert Panel:

Mr Mohamed Ezani Md. Taib (Chairperson)
Dr Abdul Rais Sanusi
Datuk Dr Aizai Azan Abdul Rahim
Dr Ashari Yunus

Contents

6.0 Introduction

6.1 Stock and Flow

6.2 Recipients' Characteristics

- Demographics

6.3 Transplant Practices

- Donor Details
- Type of transplant

6.4 Transplant Outcomes

- Patient survival

Table 6.1.1: Stock and Flow, 1996-2010

Year	96	97	98	99	00	01	02	03	04	05	06	07	08	09	10
New transplant	4	31	22	17	13	20	22	21	9	3	4	5	28	38	23
Deaths*	1	0	4	3	0	6	4	3	4	2	1	0	3	6	0
Lost to follow up	0	0	0	0	0	0	0	0	0	0	0	0	0	0	0
Alive with functioning graft at 31 st December	3	34	52	66	79	93	111	129	134	135	138	143	168	200	223

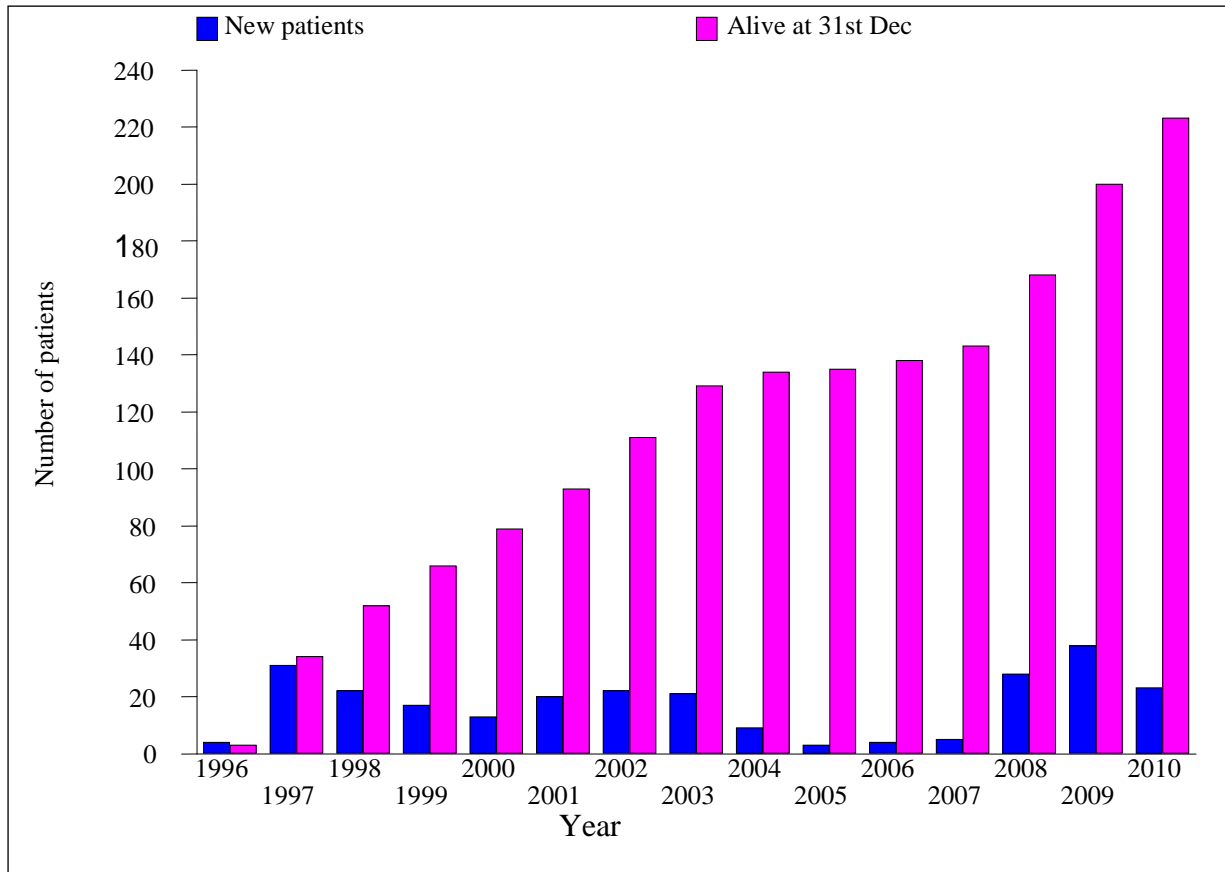


Figure 6.1.1: Stock and Flow, 1996-2010

Table 6.2.1: Gender distribution, 1996-2010

Year	96	97	98	99	00	01	02	03	04	05	06	07	08	09	10	TOTAL
Gender	No.	No.	No.	No.	No.	No.	No.	No.	No.	No.	No.	No.	No.	No.	No.	No.
Male	2	18	9	9	10	6	9	14	3	0	4	2	13	20	13	132
Female	2	13	13	8	3	14	13	7	6	3	0	3	15	18	10	128
TOTAL	4	31	22	17	13	20	22	21	9	3	4	5	28	38	23	260

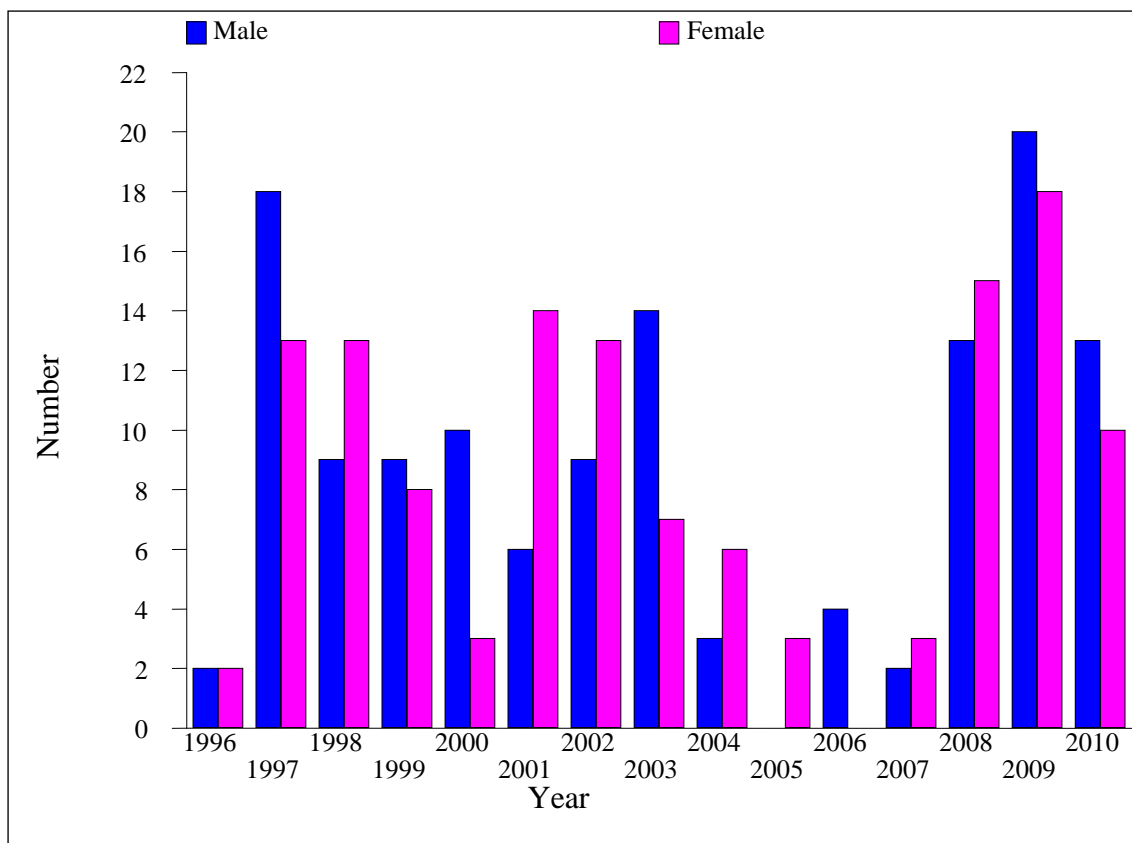


Figure 6.2.1: Gender distribution, 1996-2010

Table 6.2.2: Ethnic group distribution, 1996-2010

Year	96	97	98	99	00	01	02	03	04	05	06	07	08	09	10	TOTAL
Ethnic group	No.	No.	No.	No.	No.	No.	No.	No.	No.	No.	No.	No.	No.	No.	No.	No.
Malay	1	18	15	9	9	10	16	12	6	3	2	3	18	29	17	168
Chinese	3	11	4	3	2	9	4	6	1	0	1	0	7	6	3	60
Indian	0	2	2	2	0	1	2	2	1	0	1	0	1	3	1	18
Others	0	0	1	3	2	0	0	1	1	0	0	2	2	0	2	14
TOTAL	4	31	22	17	13	20	22	21	9	3	4	5	28	38	23	260

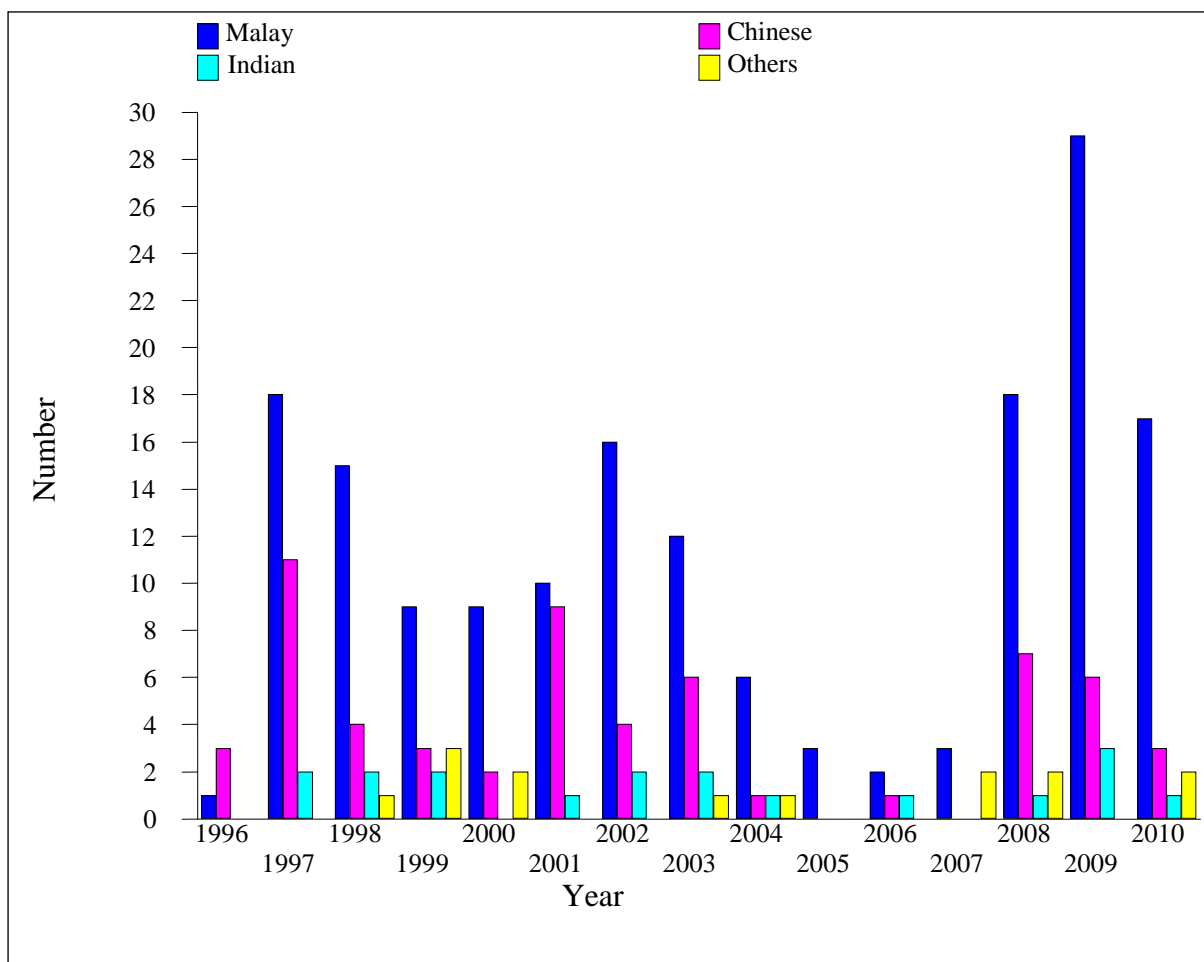


Figure 6.2.2: Ethnic group distribution, 1996-2010

Table 6.2.3: Age distribution in years, 1996-2010

Year	96	97	98	99	00	01	02	03	04	05	06	07	08	09	10	TOTAL
Age group	No.	No.	No.	No.	No.	No.	No.	No.	No.	No.	No.	No.	No.	No.	No.	No.
0-9	2	16	15	13	10	14	10	11	3	1	3	2	19	31	16	166
10-19	1	11	5	4	2	2	11	8	4	2	1	2	7	5	5	70
20-39	1	4	1	0	0	3	1	1	1	0	0	0	2	2	2	18
40-59	0	0	0	0	0	1	0	1	1	0	0	1	0	0	0	4
>=60	0	0	1	0	1	0	0	0	0	0	0	0	0	0	0	2
TOTAL	4	31	22	17	13	20	22	21	9	3	4	5	28	38	23	260
Mean	11.9	11.5	11	6.9	12.3	10.9	10.2	12.3	15.2	15	5.7	15.8	6.8	8.4	9	10.1
SD	6.6	6.7	14.5	4.1	17	14.2	6.1	11	11.4	7.8	4.6	18.4	6.2	6.9	6	9.7
Median	11.2	9.9	7.8	7	8.3	4.8	10.4	9	10.3	19.5	4.9	10.5	6.3	7.1	8.4	8
Min	4.9	3 m	3 m	7 m	1.6	5 m	2.6	1.8	4.9	6	1	3 m	1 m	2 m	3 m	2 m
Max	20.5	29.6	69.7	17.1	66.8	52.8	27.5	53.4	42	19.5	11.8	47.4	21.5	36	21.9	69.7

* Age=date of implantation – date birth

* m=Months

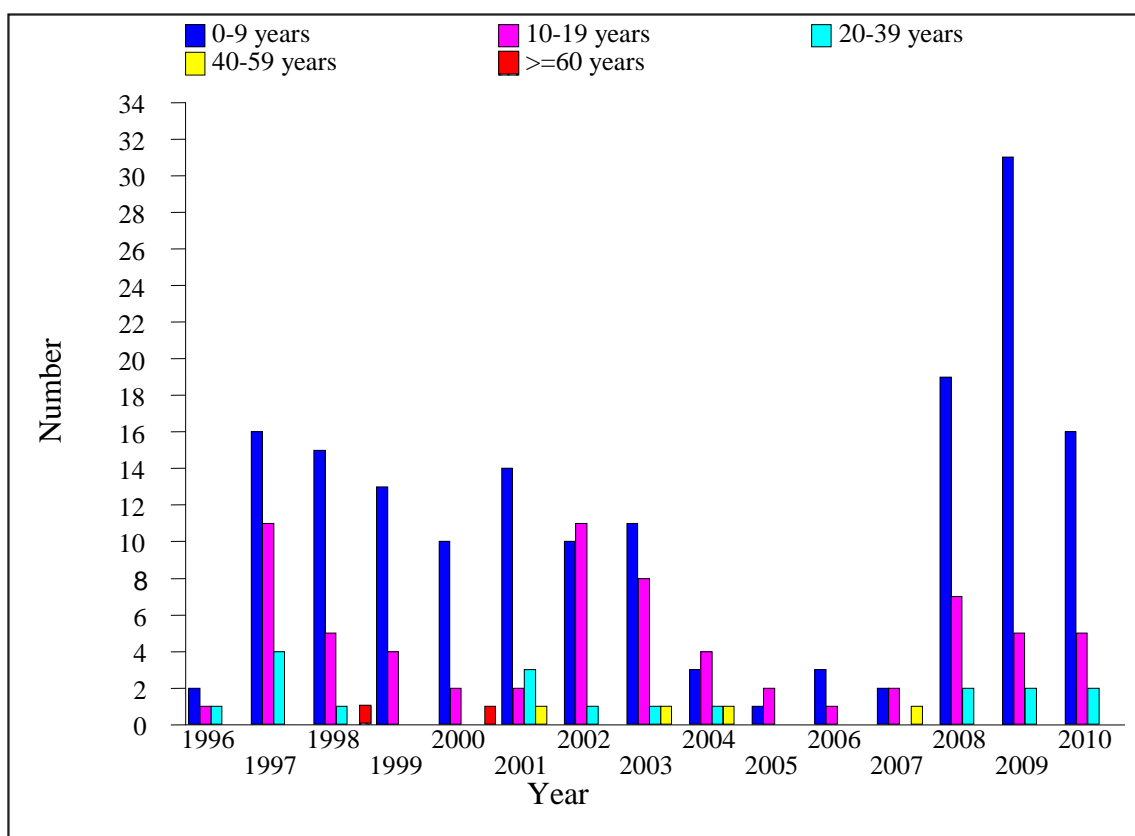


Figure 6.2.3: Age distribution in years, 1996-2010

Table 6.3.1: Number of valves harvested by type of homograft, 1996-2010

Year	96	97	98	99	00	01	02	03	04	05	06	07	08	09	10	TOTAL
Type of homograft	No.	No.	No.	No.	No.	No.	No.	No.	No.	No.	No.	No.	No.	No.	No.	No.
Aortic	8	17	10	8	11	14	10	8	7	5	14	9	15	17	14	167
Pulmonary	1	14	11	10	12	12	14	9	8	5	15	8	13	19	12	163
TOTAL	9	31	21	18	23	26	24	17	15	10	29	17	28	36	26	330

Table 6.3.2: Type of transplant, 1996-2010

Year	96	97	98	99	00	01	02	03	04	05	06	07	08	09	10	TOTAL
Type of transplant	No.	No.	No.	No.	No.	No.	No.	No.	No.	No.	No.	No.	No.	No.	No.	No.
Aortic	4	18	11	7	7	9	10	10	4	1	1	2	8	24	10	126
Pulmonary	0	13	11	10	6	11	12	11	5	2	3	3	20	14	13	134
TOTAL	4	31	22	17	13	20	22	21	9	3	4	5	28	38	23	260

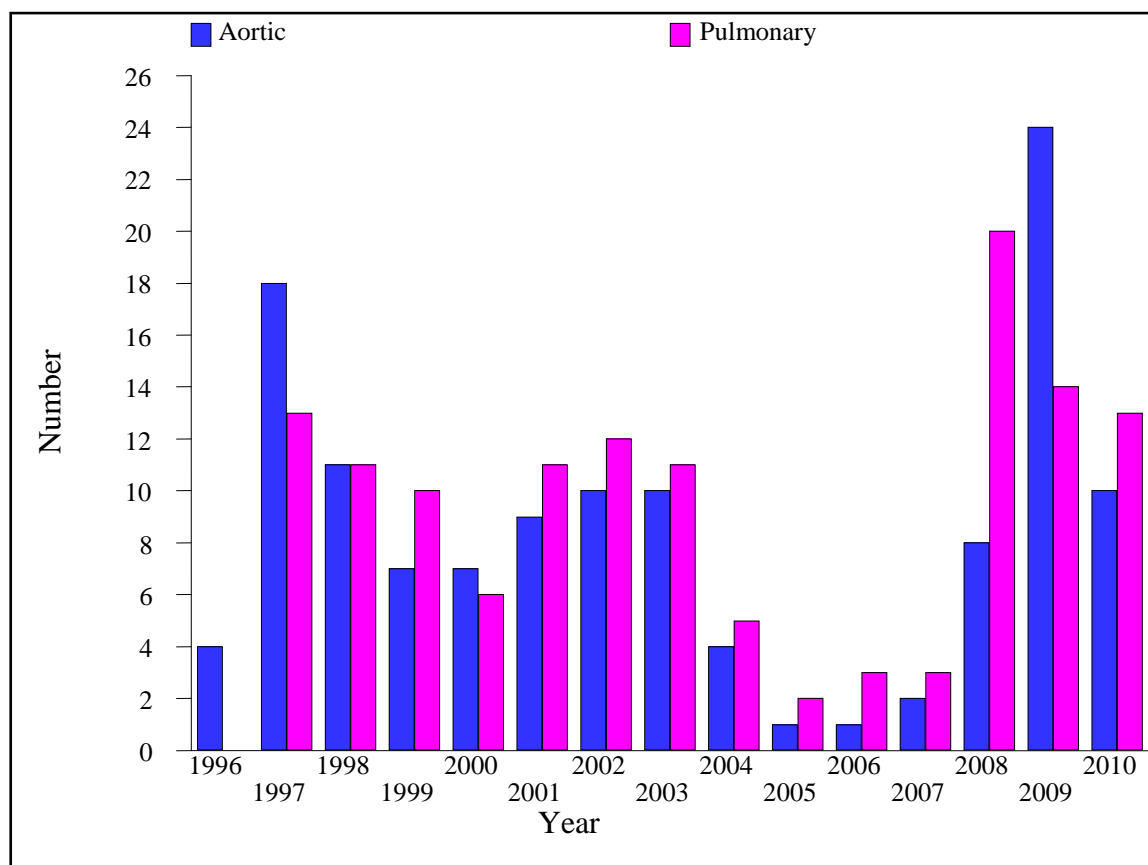


Figure 6.3.2: Type of transplant, 1996-2010

Table 6.4.1: Patient survival by gender, 1996-2010

Interval (years)	Male		Female	
	% Survival	SE	% Survival	SE
1	91	2	90	3
3	89	3	88	3
5	87	3	88	3
7	87	3	88	3
9	87	3	85	4
11	87	3	85	4
13	87	3	85	4

SE=standard error

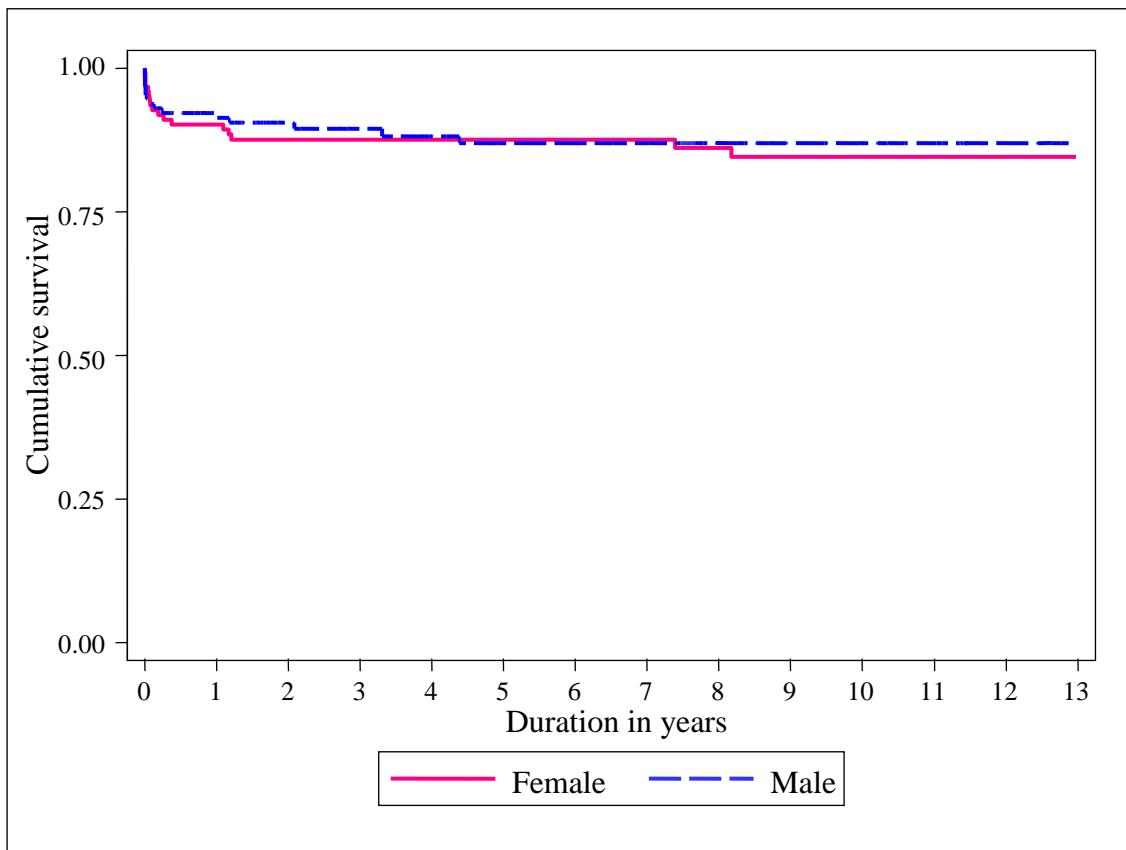


Figure 6.4.1: Patient survival by gender, 1996-2010

Table 6.4.2: Patient survival by age group, 1996-2010

Age group Interval (months)	0-9 years		10-19 years		≥20 years	
	% Survival	SE	% Survival	SE	% Survival	SE
1	90	2	94	3	91	6
3	89	3	89	4	87	7
5	89	3	87	4	81	9
7	89	3	87	4	81	9
9	87	3	85	5	81	9
11	87	3	85	5	81	9
13	87	3	85	5	81	9

SE=standard error

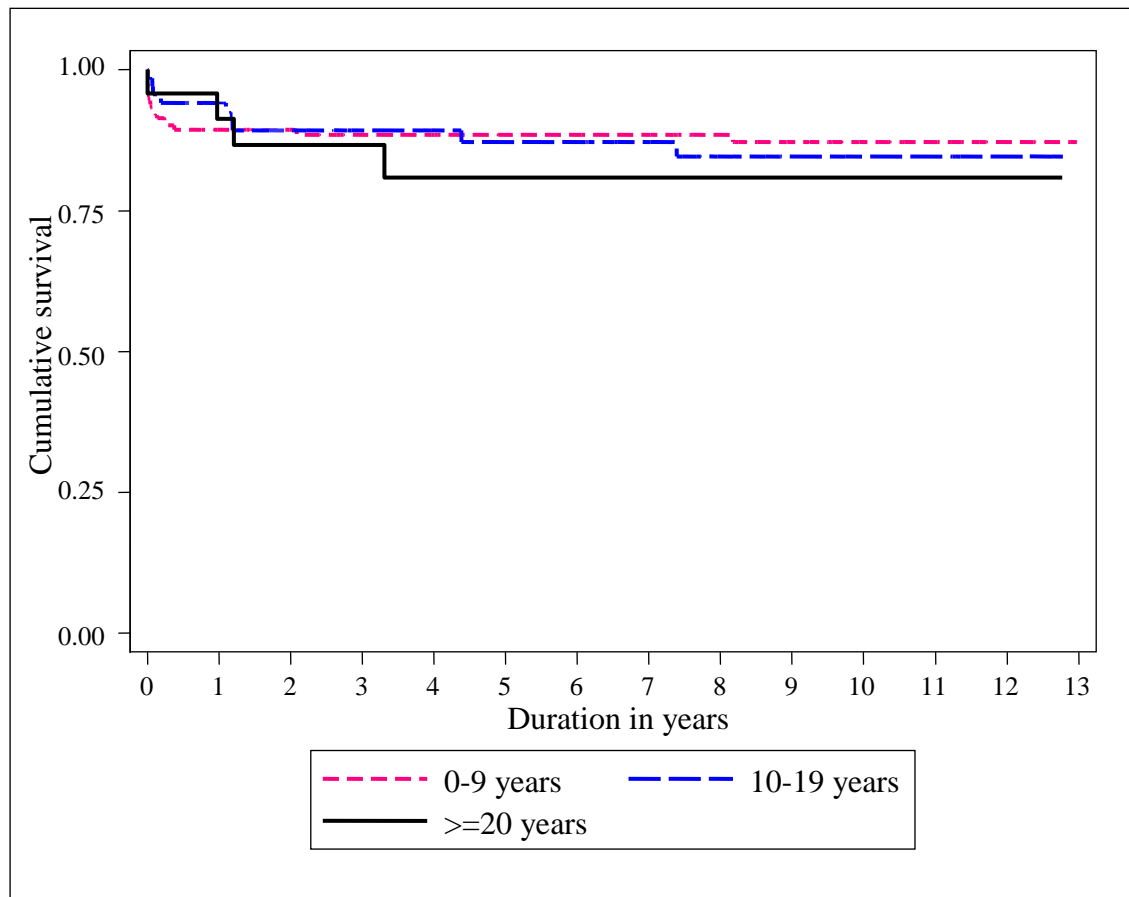


Figure 6.4.2: Patient survival by age group, 1996-2010

Table 6.4.3: Patient survival by type of homograft, 1996-2010

Type of homograft Interval (years)	Aortic		Pulmonary	
	% Survival	SE	% Survival	SE
1	91	3	91	3
3	87	3	90	3
5	86	3	88	3
7	86	3	88	3
9	83	4	88	3
11	83	4	88	3
13	83	4	88	3

SE=standard error

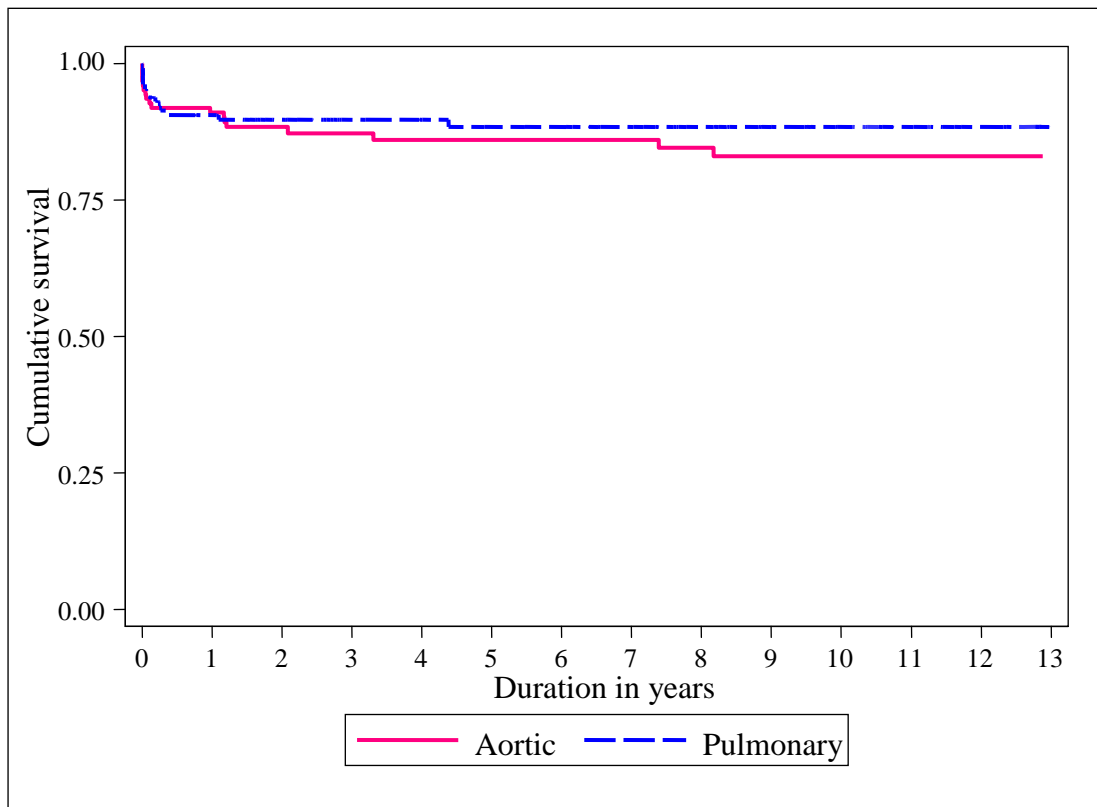


Figure 6.4.3: Patient survival by type of homograft, 1996-2010