

## **CHAPTER 3**

### **HEART AND LUNG TRANSPLANTATION**

#### *Editors:*

Mr Mohamed Ezani Md. Taib  
Dato' Dr David Chew Soon Ping  
Dr Ashari Yunus

#### *Expert Panel:*

Mr Mohamed Ezani Md. Taib (Chairperson)  
Dr Abdul Rais Sanusi  
Datuk Dr Aizai Azan Abdul Rahim  
Dr Ashari Yunus  
Dato' Dr David Chew Soon Ping

### **Contents**

#### **3.0 Introduction**

#### **3.1 Stock and Flow of Heart Transplantation**

##### **3.2 Recipients' Characteristics**

- Demographics and Clinical Status
  - Primary Diagnosis

##### **3.3 Transplant Practices**

- Type of Transplant
- Immunosuppressive Therapy and Other Medications
- Duration of Waiting Time on the Waiting List

##### **3.4 Transplant Outcomes**

- Post Transplant Complications
  - Patient Survival
  - Causes of Death

**List of Tables**

Table 3.1.1a: Stock and Flow of Heart Transplantation, 1997-2010 ..... 4

Table 3.2.1a: Distribution of Patients by Gender, 1997-2010 ..... 5

Table 3.2.2a: Distribution of Patients by Ethnic Group, 1997-2010..... 5

Table 3.2.3a: Distribution of Patients by Age, 1997-2010..... 5

Table 3.2.4a: Distribution of Patients by Primary Diagnosis, 1997-2010 ..... 5

Table 3.3.1a: Distribution of Patients by Heart Procedure, 1997-2010..... 6

Table 3.3.2a: Distribution of Patients by Immunosuppressive Used, 1997-2010 ..... 6

Table 3.3.3a: Immunosuppressive Used at Time of Last Follow-up up to 2010..... 6

Table 3.4.1: Post Transplant Events at Last Follow-up up to 2010..... 7

Table 3.4.2: Post Transplant Malignancies at Follow-up up to 2010 ..... 8

Table 3.4.3: Non-compliance at Follow-up up to 2010 ..... 8

Table 3.4.4: Patient Treated for Rejection at Follow-up up to 2010..... 9

Table 3.4.5a: Distribution of Patients by Time of Deaths, 1997-2010..... 9

Table 3.4.6: Patient Survival, 1997-2010..... 9

Table 3.4.7: Cause of Death at Discharge, 1997-2010..... 10

Table 3.4.8: Cause of Death at Follow-up, 1997-2010 ..... 11

Table 3.1.1b: Stock and Flow of Lung Transplantation, 2005-2010 ..... 11

Table 3.2.1b: Distribution of Patients by Gender, 2005-2010 ..... 12

Table 3.2.2b: Distribution of Patients by Ethnic Group, 2005-2010 ..... 12

Table 3.2.3b: Distribution of Patients by Age, 2005-2010 ..... 12

Table 3.2.4b: Distribution of Patients by Primary Diagnosis, 2005-2010..... 12

Table 3.3.1b: Distribution of Patients by Heart Procedure, 2005-2010 ..... 13

Table 3.3.3b: Immunosuppressive Used at Time of Last Follow-up up to 2010 ..... 13

Table 3.4.5b: Distribution of Patients by Time of Deaths, 2005-2010..... 13

**List of Figures**

Figure 3.1.1a: Stock and Flow of Heart Transplantation, 1997-2010..... 13

Figure 3.4.6: Patient Survival, 1997-2010... ..... 10

Figure 3.1.1b Stock and Flow of Lung Transplant and Heart Lung Transplant ..... 11

### **3.0 INTRODUCTION**

Following the introduction of heart transplant in 1997 and lung transplant in 2005, the number of thoracic organ transplants have remained few and far in between. The main limitation to the performance of heart and lung transplants has been the lack of success in obtaining viable donor thoracic organs. As a result of the infrequent performance of transplant, the results of thoracic organ transplant have not improved, with a 1 year survival post heart transplant of 65%.

In 2010, no thoracic organ transplant was conducted. An alternative approach for end stage heart failure patients, keeping them alive while awaiting heart transplant, has been the use of ventricular assist devices (VADs). In 2010, three patients received VAD implants as a bridge to heart transplant, of which 2 were implanted with the smaller Heartmate II device.

The rest of the report that follows will review the results of heart and lung transplantation in Malaysia till end of 2010.

**HEART TRANSPLANTATION**

**3.1 STOCK AND FLOW**

Table 3.1.1a: Stock and Flow of Heart Transplantation, 1997-2010

Year	1997	1998	1999	2000	2001	2002	2003	2004	2005	2006	2007	2008	2009	2010
New transplant patients	1	3	2	3	4	0	2	0	1	1	1	0	1	0
Deaths	0	1	0	3	1	3	1	0	0	1	0	0	1	0
Retransplanted	0	0	0	0	0	0	0	0	0	0	1	0	0	0
Lost to follow up	0	0	0	0	0	0	0	0	0	0	0	0	0	0
Alive at 31 <sup>st</sup> December	1	3	5	5	8	5	6	6	7	7	8	8	8	8

Note: The same patient was re-transplanted in the year 2007, thus only counted as one.

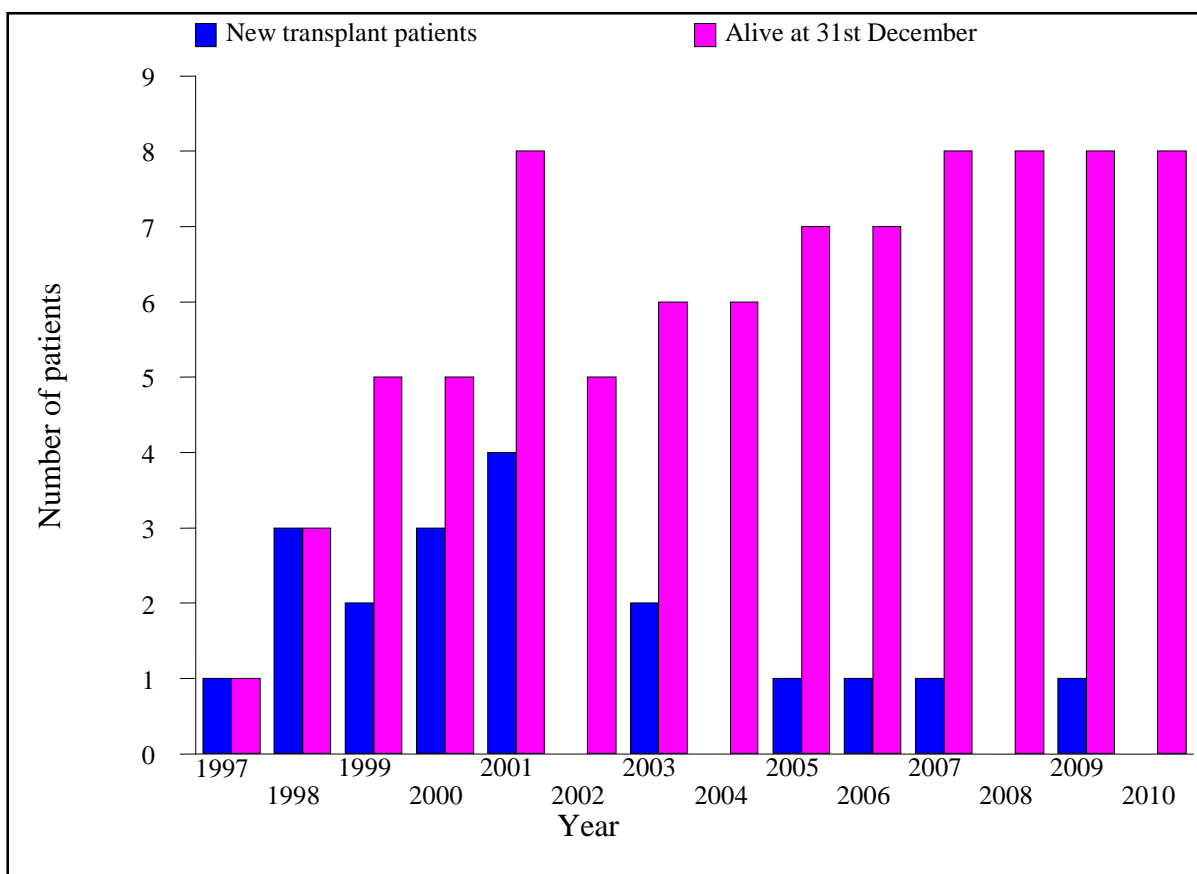


Figure 3.1.1a: Stock and Flow of Heart Transplant, 1997-2010

### 3.2 RECIPIENTS' CHARACTERISTICS

Table 3.2.1a: Distribution of Patients by Gender, 1997-2010

Year	1997	1998	1999	2000	2001	2002	2003	2004	2005	2006	2007	2008	2009	2010	TOTAL
Gender	No.	No.	No.	No.	No.	No.	No.	No.	No.	No.	No.	No.	No.	No.	No.
Male	1	3	0	2	2	0	2	0	1	1	0	0	0	0	12
Female	0	0	2	1	2	0	0	0	0	0	1	0	1	0	7
<b>TOTAL</b>	<b>1</b>	<b>3</b>	<b>2</b>	<b>3</b>	<b>4</b>	<b>0</b>	<b>2</b>	<b>0</b>	<b>1</b>	<b>1</b>	<b>1</b>	<b>0</b>	<b>1</b>	<b>0</b>	<b>19</b>

Note: The same patient was re-transplanted in the year 2007, thus only counted as one.

Table 3.2.2a: Distribution of Patients by Ethnic Group, 1997-2010

Year	1997	1998	1999	2000	2001	2002	2003	2004	2005	2006	2007	2008	2009	2010	TOTAL
Ethnic group	No.	No.	No.	No.	No.	No.	No.	No.	No.	No.	No.	No.	No.	No.	No.
Malay	0	0	1	1	2	0	0	0	1	0	0	0	0	0	5
Chinese	0	0	0	1	0	0	1	0	0	0	1	0	1	0	4
Indian	1	3	1	1	2	0	1	0	0	1	0	0	0	0	10
<b>TOTAL</b>	<b>1</b>	<b>3</b>	<b>2</b>	<b>3</b>	<b>4</b>	<b>0</b>	<b>2</b>	<b>0</b>	<b>1</b>	<b>1</b>	<b>1</b>	<b>0</b>	<b>1</b>	<b>0</b>	<b>19</b>

Note: The same patient was re-transplanted in the year 2007, thus only counted as one.

Table 3.2.3a: Distribution of Patients by Age, 1997-2010

Year	1997	1998	1999	2000	2001	2002	2003	2004	2005	2006	2007	2008	2009	2010	TOTAL
Age, years	No.	No.	No.	No.	No.	No.	No.	No.	No.	No.	No.	No.	No.	No.	No.
0-19	0	0	2	1	1	0	0	0	1	0	1	0	0	0	6
20-39	0	2	0	0	0	0	0	0	0	0	0	0	0	0	2
40-59	1	1	0	2	3	0	2	0	0	1	0	0	1	0	11
≥60	0	0	0	0	0	0	0	0	0	0	0	0	0	0	0
<b>TOTAL</b>	<b>1</b>	<b>3</b>	<b>2</b>	<b>3</b>	<b>4</b>	<b>0</b>	<b>2</b>	<b>0</b>	<b>1</b>	<b>1</b>	<b>1</b>	<b>0</b>	<b>1</b>	<b>0</b>	<b>19</b>
Mean	51	40	15	37	38	-	46	-	15	44	15	-	41	-	35
SD	-	9	1	22	17	-	8	-	-	-	-	-	-	-	16
Median	51	37	15	44	43	-	46	-	15	44	15	-	41	-	40
Minimum	51	33	15	13	14	-	40	-	15	44	15	-	41	-	13
Maximum	51	50	16	55	54	-	52	-	15	44	15	-	41	-	55

Age=date of transplant-date of birth

Note: The same patient was re-transplanted in the year 2007, thus only counted as one.

Age for 2007 patient was same for 1<sup>st</sup> and 2<sup>nd</sup> transplant

Table 3.2.4a: Distribution of Patients by Primary Diagnosis, 1997-2010

Year	1997	1998	1999	2000	2001	2002	2003	2004	2005	2006	2007	2008	2009	2010	TOTAL
Primary diagnosis	No.	No.	No.	No.	No.	No.	No.	No.	No.	No.	No.	No.	No.	No.	No.
Ischaemic Cardiomyopathy	1	3	0	1	1	0	2	0	0	1	0	0	0	0	9
Idiopathic Dilated Cardiomyopathy	0	0	2	1	2	0	0	0	1	0	0	0	0	0	6
Restrictive Cardiomyopathy	0	0	0	0	0	0	0	0	0	0	0	0	0	0	0
End Stage Valvular Heart Disease	0	0	0	0	1	0	0	0	0	0	0	0	0	0	1
Hypertrophic Cardiomyopathy	0	0	0	1	0	0	0	0	0	0	0	0	0	0	1
Others	0	0	0	0	0	0	0	0	0	0	1	0	1	0	2
<b>TOTAL</b>	<b>1</b>	<b>3</b>	<b>2</b>	<b>3</b>	<b>4</b>	<b>0</b>	<b>2</b>	<b>0</b>	<b>1</b>	<b>1</b>	<b>1</b>	<b>0</b>	<b>1</b>	<b>0</b>	<b>19</b>

Note: The same patient was re-transplanted in the year 2007, thus only counted as one.

## 3.3 TRANSPLANT PRACTICES

Table 3.3.1a: Distribution of Patients by Heart Procedure, 1997-2010.

Year	97	98	99	00	01	02	03	04	05	06	07	08	09	10	TOTAL
Heart Procedure	No.	No.	No.	No.	No.	No.	No.	No.	No.	No.	No.	No.	No.	No.	No.
Orthotopic Bicaval	1	1	0	0	0	0	0	0	0	0	0	0	0	0	2
Orthotopic Traditional	0	2	2	3	4	0	2	0	1	1	1	0	1	0	17
Heterotopic	0	0	0	0	0	0	0	0	0	0	0	0	0	0	0
<b>TOTAL</b>	<b>1</b>	<b>3</b>	<b>2</b>	<b>3</b>	<b>4</b>	<b>0</b>	<b>2</b>	<b>0</b>	<b>1</b>	<b>1</b>	<b>1</b>	<b>0</b>	<b>1</b>	<b>0</b>	<b>19</b>

Table 3.3.2a: Distribution of Patients by Immunosuppressive Used, 1997-2010

Year	97	98	99	00	01	02	03	04	05	06	07	08	09	10	Total
Type of immunosuppressive	No.	No.	No.	No.	No.	No.	No.	No.	No.	No.	No.	No.	No.	No.	No.
<b>Steroids</b>															
Prednisolone	1	3	2	3	4	0	1	0	1	0	1	0	1	0	17
Methylprednisolone	1	3	2	3	4	0	2	0	1	1	2	0	1	0	20
<b>Calcineurin Inhibitors</b>															
Cyclosporin A	0	0	0	0	0	0	1	0	0	1	0	0	1	0	3
Neoral®	1	3	2	3	4	0	0	0	1	0	0	0	0	0	14
Tacrolimus (FK506)	0	0	0	0	0	0	0	0	0	0	1	0	0	0	1
<b>Antimetabolites</b>															
Azathioprine (AZA)	1	3	2	3	4	0	2	0	0	1	0	0	0	0	16
Mycophenolate Mofetil (MMF)	0	0	0	0	1	0	0	0	1	0	1	0	1	0	4
<b>Anti-lymphocyte Receptor Antibodies</b>															
Anti-thymocyte globulin (ATG)	0	0	0	0	0	0	0	0	0	0	2	0	0	0	2
<b>TOTAL patients at notification</b>	<b>1</b>	<b>3</b>	<b>2</b>	<b>3</b>	<b>4</b>	<b>0</b>	<b>2</b>	<b>0</b>	<b>1</b>	<b>1</b>	<b>1</b>	<b>0</b>	<b>1</b>	<b>0</b>	<b>19</b>

Table 3.3.3a: Immunosuppressive Used at Time of Last Follow-up up to 2010

Year of follow up*	2004	2005	2006	2007	2008	2009	2010
Type of immunosuppressive	No.	No.	No.	No.	No.	No.	No.
<b>Steroids</b>							
Prednisolone	3	4	4	3	4	3	3
Methylprednisolone	1	1	0	0	2	2	1
<b>Calcineurin Inhibitors</b>							
Cyclosporin A	0	0	0	1	6	4	0
Neoral®	6	6	7	6	1	3	7
FK506	0	0	0	0	1	1	1
<b>Antimetabolites</b>							
Azathioprine (AZA)	3	3	3	3	2	2	1
Mycophenolate Mofetil (MMF)	3	3	5	5	6	6	6
<b>TOTAL patients at follow-up</b>	<b>6</b>	<b>6</b>	<b>7</b>	<b>7</b>	<b>8</b>	<b>8</b>	<b>8</b>

\*Data according to year of follow up of transplanted patients

Table 3.3.4a: Duration of Waiting Time on Waiting List, 1997-2010

Year	97	98	99	00	01	02	03	04	05	06	07	08	09	10	TOTAL
Duration (months)*	No.	No.	No.	No.	No.	No.	No.	No.	No.	No.	No.	No.	No.	No.	No.
<5	0	2	1	0	1	0	1	0	0	0	0	0	0	0	5
5≤10	1	0	1	0	1	0	0	0	1	0	0	0	0	0	4
10≤15	0	0	0	1	0	0	0	0	0	1	1	0	1	0	4
15≤20	0	0	0	1	0	0	0	0	0	0	0	0	0	0	1
20≤25	0	0	0	0	0	0	0	0	0	0	0	0	0	0	0
25≤30	0	0	0	0	0	0	0	0	0	0	0	0	0	0	0
30≤35	0	0	0	0	0	0	0	0	0	0	0	0	0	0	0
35≤40	0	0	0	0	0	0	1	0	0	0	0	0	0	0	1
<b>TOTAL</b>	<b>1</b>	<b>2</b>	<b>2</b>	<b>2</b>	<b>2</b>	<b>0</b>	<b>2</b>	<b>0</b>	<b>1</b>	<b>1</b>	<b>1</b>	<b>0</b>	<b>1</b>	<b>0</b>	<b>15</b>
Mean	6	2	4	15	5	-	20	-	9	10	13	-	13	-	10
SD	-	0	1	6	5	-	25	-	-	-	0	-	-	-	9
Median	6	2	4	15	5	-	20	-	9	10	13	-	13	-	9
Minimum	6	2	3	10	1	-	2	-	9	10	13	-	13	-	1
Maximum	6	2	5	19	8	-	37	-	9	10	13	-	13	-	37

\*Duration=date of transplant-date added to wait list

### 3.4 TRANPLANT OUTCOMES

Table 3.4.1: Post Transplant Events at Last Follow-up up to 2010

Year of transplant*	97	98	99	00	01	02	03	04	05	06	07	08	09	10	TOTAL
Type of post transplant events	No.	No.	No.	No.	No.	No.	No.	No.	No.	No.	No.	No.	No.	No.	No.
Drug Treated Hypertension	1	2	2	1	3	0	1	0	0	0	0	0	0	0	10
Bone Disease (Symptomatic)	1	0	0	0	2	0	0	0	0	0	0	0	0	0	3
Chronic Liver Disease	0	0	0	0	0	0	0	0	0	0	0	0	0	0	0
Cataracts	0	0	0	0	0	0	0	0	0	0	0	0	0	0	0
Diabetes	1	2	0	0	1	0	1	0	0	0	0	0	0	0	5
Renal Dysfunction	1	1	1	0	0	0	0	0	0	0	0	0	0	0	3
Stroke	0	0	0	0	0	0	0	0	0	0	0	0	0	0	0
Drug-Treated Hyperlipidaemia	1	2	2	1	3	0	1	0	1	0	1	0	1	0	12
<b>TOTAL patients at follow-up</b>	<b>1</b>	<b>2</b>	<b>2</b>	<b>1</b>	<b>3</b>	<b>0</b>	<b>1</b>	<b>0</b>	<b>1</b>	<b>0</b>	<b>1</b>	<b>0</b>	<b>1</b>	<b>0</b>	<b>13</b>

\*Data according to year of transplant of patient

Table 3.4.2: Post Transplant Malignancies at Follow-up up to 2010

Year of transplant*	97	98	99	00	01	02	03	04	05	06	07	08	09	10	TOTAL
Type of post transplant malignancies	No.	No.	No.	No.	No.	No.	No.	No.	No.	No.	No.	No.	No.	No.	No.
Donor related	0	0	0	0	0	0	0	0	0	0	0	0	0	0	0
Recurrence of pre-transplant tumor	0	0	0	0	0	0	0	0	0	0	0	0	0	0	0
De novo solid tumor	1	0	0	0	0	0	0	0	0	0	0	0	0	0	1
De novo lymphoproliferative	0	0	1	0	0	0	0	0	0	0	0	0	0	0	1
Skin	0	0	0	0	0	0	0	0	0	0	0	0	0	0	0
Total patients at follow up	1	2	2	1	3	0	1	0	1	0	1	0	1	0	13

\*Data according to year of transplant of patient

Table 3.4.3: Non-compliance at Follow-up up to 2010

Year of transplant*	97	98	99	00	01	02	03	04	05	06	07	08	09	10	TOTAL
Non-compliance during follow-up	No.	No.	No.	No.	No.	No.	No.	No.	No.	No.	No.	No.	No.	No.	No.
• Yes	0	0	1	0	0	0	0	0	0	0	0	0	0	0	1
• No	1	2	1	1	3	0	1	0	1	0	1	0	1	0	12
• Missing	0	0	0	0	0	0	0	0	0	0	0	0	0	0	0
<b>TOTAL patients at follow-up</b>	<b>1</b>	<b>2</b>	<b>2</b>	<b>1</b>	<b>3</b>	<b>0</b>	<b>1</b>	<b>0</b>	<b>1</b>	<b>0</b>	<b>1</b>	<b>0</b>	<b>1</b>	<b>0</b>	<b>13</b>
<i>Areas of non-compliance:</i>															
• Immunosuppression medication	0	0	1	0	0	0	0	0	0	0	0	0	0	0	1
• Patient unable to afford immunosuppression medications	0	0	0	0	0	0	0	0	0	0	0	0	0	0	0
• Other medication	0	0	0	0	0	0	0	0	0	0	0	0	0	0	0
• Other therapeutic regimen	0	0	0	0	0	0	0	0	0	0	0	0	0	0	0
<b>TOTAL patients with noncompliance</b>	<b>0</b>	<b>0</b>	<b>1</b>	<b>0</b>	<b>0</b>	<b>0</b>	<b>0</b>	<b>0</b>	<b>0</b>	<b>0</b>	<b>0</b>	<b>0</b>	<b>0</b>	<b>0</b>	<b>1</b>

\*Data according to year of transplant of patient



Table 3.4.4: Patient Treated for Rejection at Follow-up up to 2010

Year of transplant*	97	98	99	00	01	02	03	04	05	06	07	08	09	10	TOTAL
<b>Patient treated for rejection</b>	<b>No.</b>	<b>No.</b>	<b>No.</b>	<b>No.</b>	<b>No.</b>	<b>No.</b>	<b>No.</b>	<b>No.</b>	<b>No.</b>	<b>No.</b>	<b>No.</b>	<b>No.</b>	<b>No.</b>	<b>No.</b>	<b>No.</b>
• Yes	0	1	0	0	1	0	0	0	0	0	0	0	1	0	3
• No	1	1	2	1	2	0	1	0	1	0	1	0	0	0	10
<b>TOTAL patients at follow-up</b>	<b>1</b>	<b>2</b>	<b>2</b>	<b>1</b>	<b>3</b>	<b>0</b>	<b>1</b>	<b>0</b>	<b>1</b>	<b>0</b>	<b>1</b>	<b>0</b>	<b>1</b>	<b>0</b>	<b>13</b>
<i>Number of rejection events</i>															
• 1	0	1	0	0	1	0	0	0	0	0	0	0	1	0	3
• 2	0	0	0	0	0	0	0	0	0	0	0	0	0	0	0
<b>TOTAL patients with rejection</b>	<b>0</b>	<b>1</b>	<b>0</b>	<b>0</b>	<b>1</b>	<b>0</b>	<b>0</b>	<b>0</b>	<b>0</b>	<b>0</b>	<b>0</b>	<b>0</b>	<b>1</b>	<b>0</b>	<b>3</b>

\*Data according to year of transplant of patient

Table 3.4.5a: Distribution of Patients by Time of Deaths, 1997-2010

Year of discharge	97	98	99	00	01	02	03	04	05	06	07	08	09	10	TOTAL
<b>Time of deaths*</b>	<b>No.</b>	<b>No.</b>	<b>No.</b>	<b>No.</b>	<b>No.</b>	<b>No.</b>	<b>No.</b>	<b>No.</b>	<b>No.</b>	<b>No.</b>	<b>No.</b>	<b>No.</b>	<b>No.</b>	<b>No.</b>	<b>No.</b>
<3 months (at discharge)	0	1	0	2	0	1	1	0	0	1	0	0	0	0	6
3-<6 months	0	0	0	0	0	0	0	0	0	0	0	0	0	0	0
6 months-1 year	0	0	0	0	0	1	0	0	0	0	0	0	0	0	1
>1 year	0	0	0	1	1	1	0	0	0	0	0	0	1	0	4
<b>TOTAL patients who died</b>	<b>0</b>	<b>1</b>	<b>0</b>	<b>3</b>	<b>1</b>	<b>3</b>	<b>1</b>	<b>0</b>	<b>0</b>	<b>1</b>	<b>0</b>	<b>0</b>	<b>1</b>	<b>0</b>	<b>11</b>

\*Time=Date of death-date of transplant

Table 3.4.6: Patient Survival, 1997-2010

Year of Transplant	1997-2009	
Interval	% Survival	SE
6 months	70	10
1 year	65	11
2 year	53	12
3 year	47	12
4 year	47	12
5 year	47	12
6 year	47	12
7 year	47	12
8 year	47	12
9 year	47	12
10 year	47	12
11 year	31	15

SE=standard error

**Duration = date follow up-date transplant, if alive at discharge**

= date of discharge-date of transplant, if alive but lost to follow up

= date of discharge-date of transplant, if dead at discharge

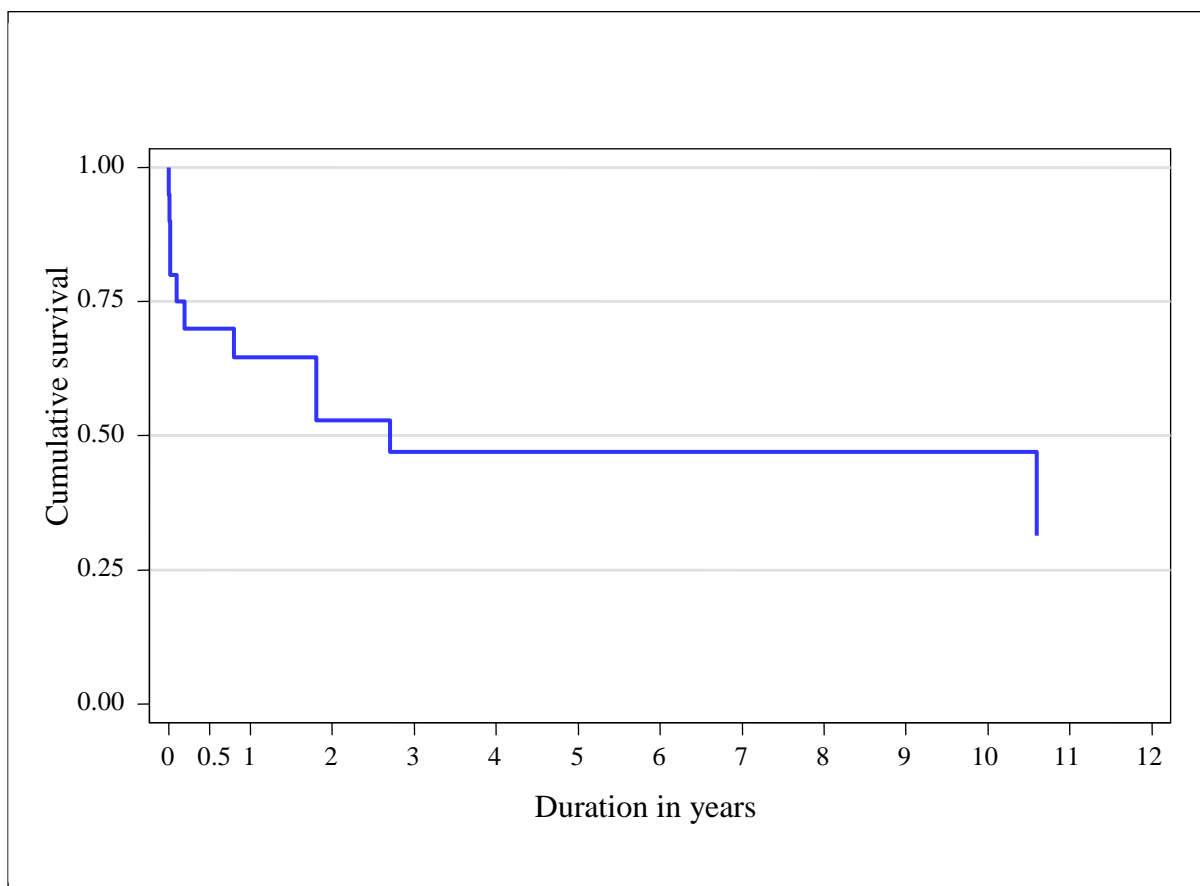


Figure 3.4.6: Patient Survival, 1997-2010

Table 3.4.7: Cause of Death at Discharge, 1997-2010

Year	97	98	99	00	01	02	03	04	05	06	07	08	09	10	TOTAL
Cause of death	No.	No.	No.	No.	No.	No.	No.	No.	No.	No.	No.	No.	No.	No.	No.
Hyperacute rejection	0	0	0	0	0	0	1	0	0	0	0	0	0	0	1
Multi organ failure	0	0	0	1	0	0	0	0	0	0	0	0	0	0	1
Respiratory failure secondary to septicaemia	0	0	0	0	0	1	0	0	0	0	0	0	0	0	1
Respiratory failure, renal function and liver failure, ARDS, septicaemia	0	0	0	1	0	0	0	0	0	0	0	0	0	0	1
Septicaemia, multiorgan failure	0	1	0	0	0	0	0	0	0	0	0	0	0	0	1
Graft failure	0	0	0	0	0	0	0	0	0	1	0	0	0	0	1
<b>TOTAL patients who died at discharge</b>	<b>0</b>	<b>1</b>	<b>0</b>	<b>2</b>	<b>0</b>	<b>1</b>	<b>1</b>	<b>0</b>	<b>0</b>	<b>1</b>	<b>0</b>	<b>0</b>	<b>0</b>	<b>0</b>	<b>6</b>

Table 3.4.8: Cause of Death at Follow-up, 1997-2010

Year	97	98	99	00	01	02	03	04	05	06	07	08	09	10	TOTAL
Cause of death	No.	No.	No.	No.	No.	No.	No.	No.	No.	No.	No.	No.	No.	No.	No.
Severe Bleeding	0	0	0	0	0	1	0	0	0	0	0	0	0	0	1
Lung cancer, small cell type bronchopneumonia	0	0	0	1	0	0	0	0	0	0	0	0	0	0	1
Rejection due to non compliance	0	0	0	0	1	0	0	0	0	0	0	0	0	0	1
Sudden death due most likely to graft CAD	0	0	0	0	0	0	0	0	0	0	0	0	1	0	1
Unknown	0	0	0	0	0	1	0	0	0	0	0	0	0	0	1
<b>TOTAL patients who died at follow up</b>	<b>0</b>	<b>0</b>	<b>0</b>	<b>1</b>	<b>1</b>	<b>2</b>	<b>0</b>	<b>0</b>	<b>0</b>	<b>0</b>	<b>0</b>	<b>0</b>	<b>1</b>	<b>0</b>	<b>5</b>

### LUNG TRANSPLANTATION

Table 3.1.1b: Stock and Flow of Lung Transplantation, 2005-2010

Year	2005	2006	2007	2008	2009	2010
New transplant patients	1	1	2	0	0	1
Deaths	0	1	1	0	0	2
Retransplanted	0	0	0	0	0	0
Lost to follow up	0	0	0	0	0	0
Alive at 31 <sup>st</sup> December	1	1	2	2	2	1

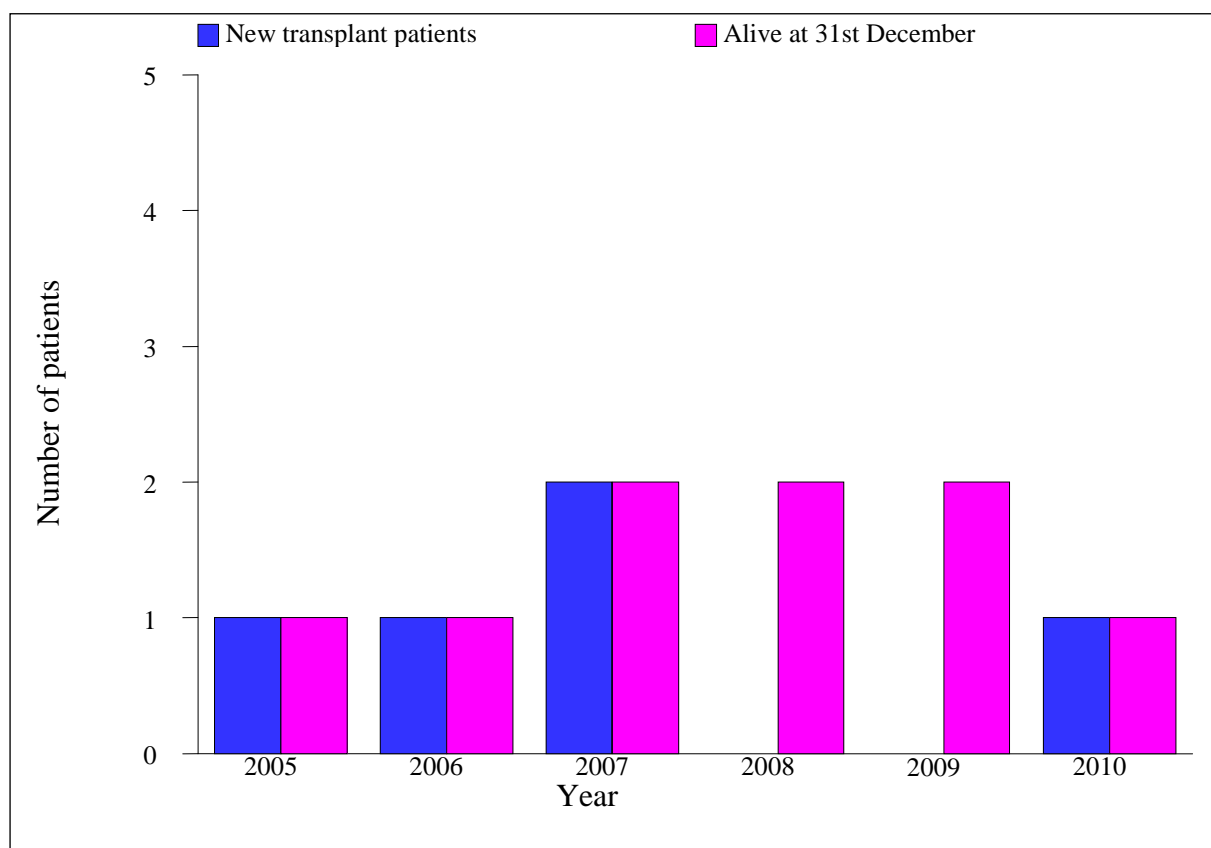


Figure 3.1.1b Stock and Flow of Lung Transplant and Heart Lung Transplant

**3.2 RECIPIENTS' CHARACTERISTICS**

Table 3.2.1b: Distribution of Patients by Gender, 2005-2010

Year	2005	2006	2007	2008	2009	2010	TOTAL
Gender	No.	No.	No.	No.	No.	No.	No.
Male	1	1	1	0	0	0	3
Female	0	0	1	0	0	1	2
<b>TOTAL</b>	<b>1</b>	<b>1</b>	<b>2</b>	<b>0</b>	<b>0</b>	<b>1</b>	<b>5</b>

Table 3.2.2b: Distribution of Patients by Ethnic Group, 2005-2010

Year	2005	2006	2007	2008	2009	2010	TOTAL
Ethnic group	No.	No.	No.	No.	No.	No.	No.
Malay	0	0	1	0	0	0	1
Chinese	0	0	0	0	0	0	0
Indian	1	1	0	0	0	1	3
Bumiputra Sarawak	0	0	1	0	0	0	1
<b>TOTAL</b>	<b>1</b>	<b>1</b>	<b>2</b>	<b>0</b>	<b>0</b>	<b>1</b>	<b>5</b>

Table 3.2.3b: Distribution of Patients by Age, 2005-2010

Year	2005	2006	2007	2008	2009	2010	TOTAL
Age, years	No.	No.	No.	No.	No.	No.	No.
0-19	0	0	1	0	0	0	1
20-39	0	1	1	0	0	0	2
40-59	1	0	0	0	0	1	2
≥60	0	0	0	0	0	0	0
<b>TOTAL</b>	<b>1</b>	<b>1</b>	<b>2</b>	<b>0</b>	<b>0</b>	<b>1</b>	<b>5</b>

Age=date of transplant-date of birth

Table 3.2.4b: Distribution of Patients by Primary Diagnosis, 2005-2010

Year	2005	2006	2007	2008	2009	2010	TOTAL
Primary diagnosis	No.	No.	No.	No.	No.	No.	No.
Idiopathic pulmonary fibrosis	1	1	1	0	0	1	4
Idiopathic pulmonary arterial hypertension	0	0	1	0	0	0	1
Chronic obstructive pulmonary disease	0	0	0	0	0	0	0
Bronchiectasis	0	0	0	0	0	0	0
<b>TOTAL</b>	<b>1</b>	<b>1</b>	<b>2</b>	<b>0</b>	<b>0</b>	<b>1</b>	<b>5</b>

### 3.3 TRANSPLANT PRACTICES

Table 3.3.1b: Distribution of Patients by Heart Procedure, 2005-2010

Year	2005	2006	2007	2008	2009	2010	TOTAL
Heart Procedure	No.	No.	No.	No.	No.	No.	No.
Single lung transplant	1	0	0	0	0	0	1
Double lung transplant	0	1	1	0	0	1	3
Heart-Lung transplant	0	0	1	0	0	0	1
<b>TOTAL</b>	<b>1</b>	<b>1</b>	<b>2</b>	<b>0</b>	<b>0</b>	<b>1</b>	<b>5</b>

Table 3.3.3b: Immunosuppressive Used at Time of Last Follow-up up to 2010

Year of follow up*	2005	2006	2007	2008	2009	2010
Type of immunosuppressive	No.	No.	No.	No.	No.	No.
<b>Steroids:</b>						
Prednisolone	0	0	0	0	0	0
Methylprednisolone	0	0	0	0	0	0
<b>T-Cell Activation Inhibitors:</b>						
Cyclosporin A	0	0	0	0	0	1
Neoral®	0	0	0	0	0	0
FK506 (Tacrolimus)	0	0	0	0	0	1
<b>Antimetabolites:</b>						
Mycophenolate Mofetil (MMF)	0	0	0	0	0	0
<b>TOTAL patients at follow-up</b>	<b>0</b>	<b>0</b>	<b>0</b>	<b>0</b>	<b>0</b>	<b>1</b>

\*Data according to year of follow up of transplanted patients

There is only one Immunosuppressive Used observation of Last FU in 2010.

### 3.4 TRANSPLANT OUTCOMES

Table 3.4.5b: Distribution of Patients by Time of Deaths, 2005-2010

Year of discharge	2005	2006	2007	2008	2009	2010	TOTAL
Time of deaths*	No.	No.	No.	No.	No.	No.	No.
<3 months (at discharge)	0	1	1	0	0	1	3
3-<6 months	0	0	0	0	0	0	0
6 months-1 year	0	0	0	0	0	0	0
>1 year	0	0	0	0	0	1	1
<b>TOTAL patients who died</b>	<b>0</b>	<b>1</b>	<b>1</b>	<b>0</b>	<b>0</b>	<b>2</b>	<b>4</b>

\*Time=Date of death–date of transplant